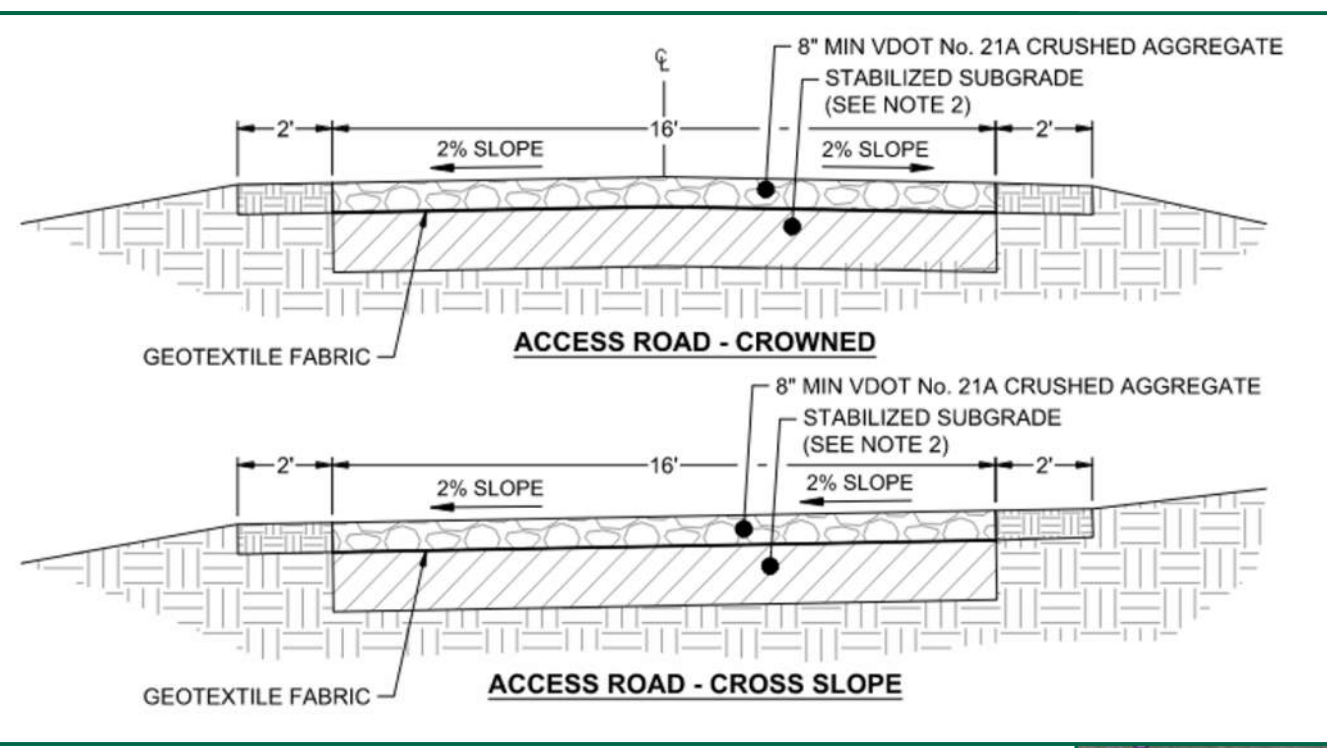


Attachment O – Site Plan, Context Map

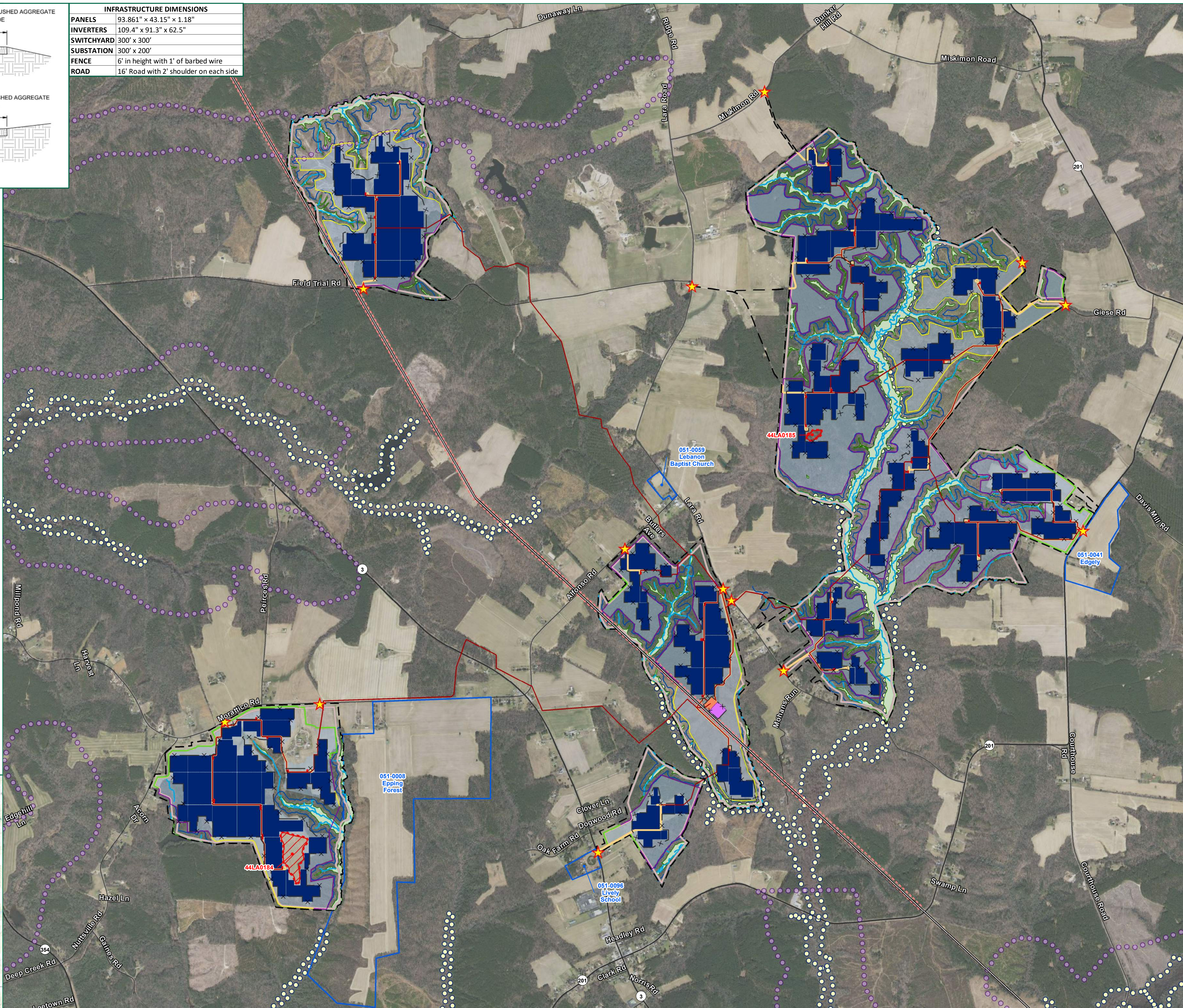
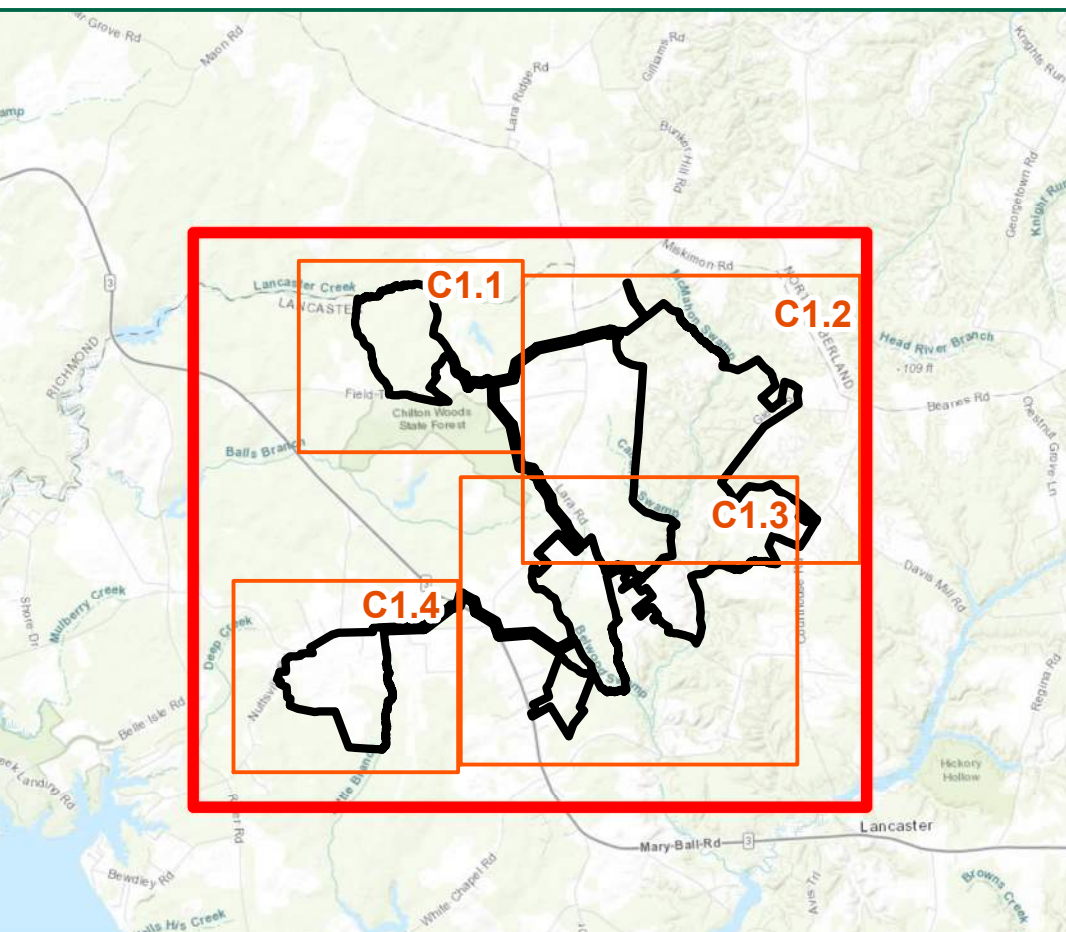


INFRASTRUCTURE DIMENSIONS	
PANELS	93.861" x 43.15" x 1.18"
INVERTERS	109.4" x 91.3" x 62.5"
SWITCHYARD	300' x 300'
SUBSTATION	300' x 200'
FENCE	6' in height with 1' of barbed wire
ROAD	16' Road with 2' shoulder on each side

NOTES:

1. PROJECT LIMITS HAVE BEEN SURVEYED.
2. ARCHAEOLOGICAL RESOURCE BOUNDARIES DELINEATED BY DUTTON + ASSOCIATES DURING A CULTURAL RESOURCE SURVEY.
3. WETLANDS AND STREAMS HAVE BEEN DELINEATED BY TIMMONS GROUP AND CONFIRMED BY THE USACE UNDER CONFIRMATION NUMBER NAD-2021-00432.
4. RESOURCE PROTECTION AREAS HAVE BEEN DETERMINED BY TIMMONS GROUP AND ARE AWAITING CONFIRMATION FROM LANCASTER COUNTY.
5. LAYOUT IS PRELIMINARY AND IS SUBJECT TO CHANGE. PROJECT WILL BE DESIGNED AND BUILT IN ACCORDANCE WITH THE MITIGATION PLAN.
6. CONTOURS SHOWN ARE EXISTING. THE FINAL POST-CONSTRUCTION SITE MAP WILL INCLUDE FINAL GRADING IN ACCORDANCE WITH 9VAC15-60-70A.

- Legend**
- Project Parcel Boundary
 - Entrance
 - Existing Electric Transmission Line
 - Transmission Line Easement
 - Proposed Power Collection Lines
 - Internal Roads
 - Solar Arrays
 - Substation
 - Switchyard
 - Fence
 - Resource Protection Area
 - Delineated Stream
 - Delineated Wetland
 - FEMA Flood Zone
 - 800' Lancaster County Water Overlay District
 - Archaeological Resources
 - Architectural Resources
 - 25' Archaeological Resource Buffer
 - Property Setbacks
 - Maximum Extent of Potential Project Improvements
- Perimeter Landscaping**
- Planted Buffer
 - Existing Vegetation
 - Natural Buffer



TIMMONS GROUP
 YOUR VISION ACHIEVED THROUGH OURS.
 1001 Boulder Parkway, Suite 300
 Richmond, VA 23225
 TEL 804-200-6800
 www.timmons.com

PROJECT NAME & LOCATION
WALLER SOLAR
 LANCASTER COUNTY,
 VIRGINIA

DATE	11/10/2022
PROJECT NUMBER	45249.014
PROJECT NAME	WALLER SOLAR
DESIGNED BY / DRAWN BY	L. WHEELER

NOTES

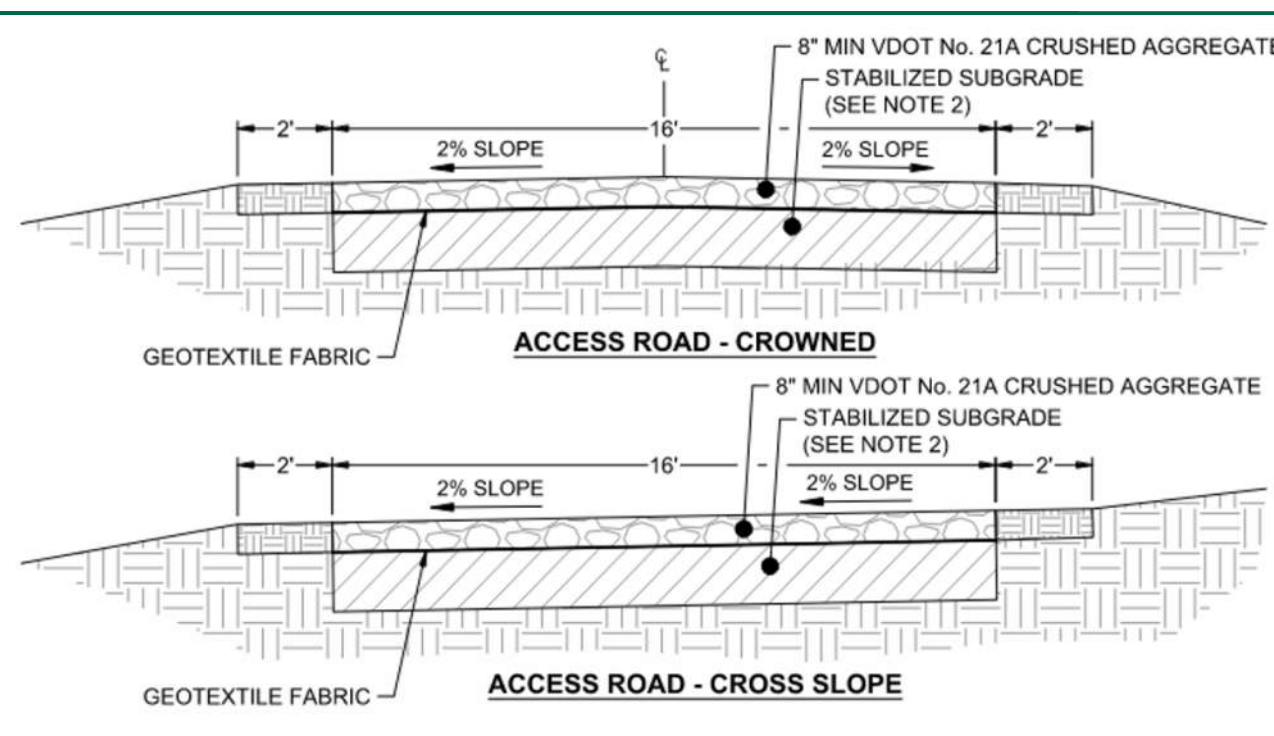
These exhibits and associated documents are the exclusive property of TIMMONS GROUP and may not be reproduced in whole or in part and shall not be used for any purpose whatsoever, inclusive, but not limited to construction, bidding, and/or construction taking without the express written consent of

REVISIONS

#	DATE	DESCRIPTION

DRAWING DESCRIPTION
PRELIMINARY SITE PLAN

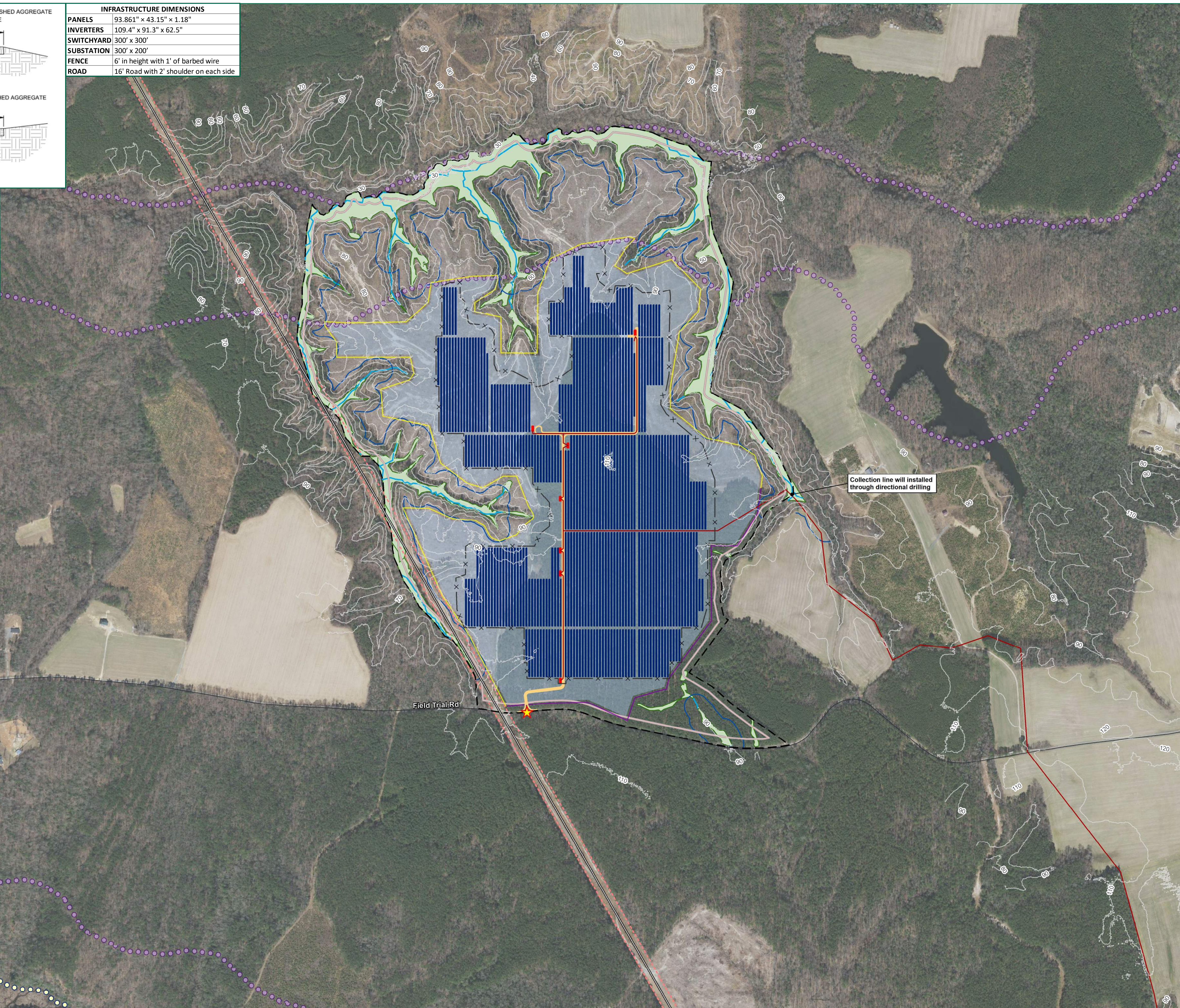
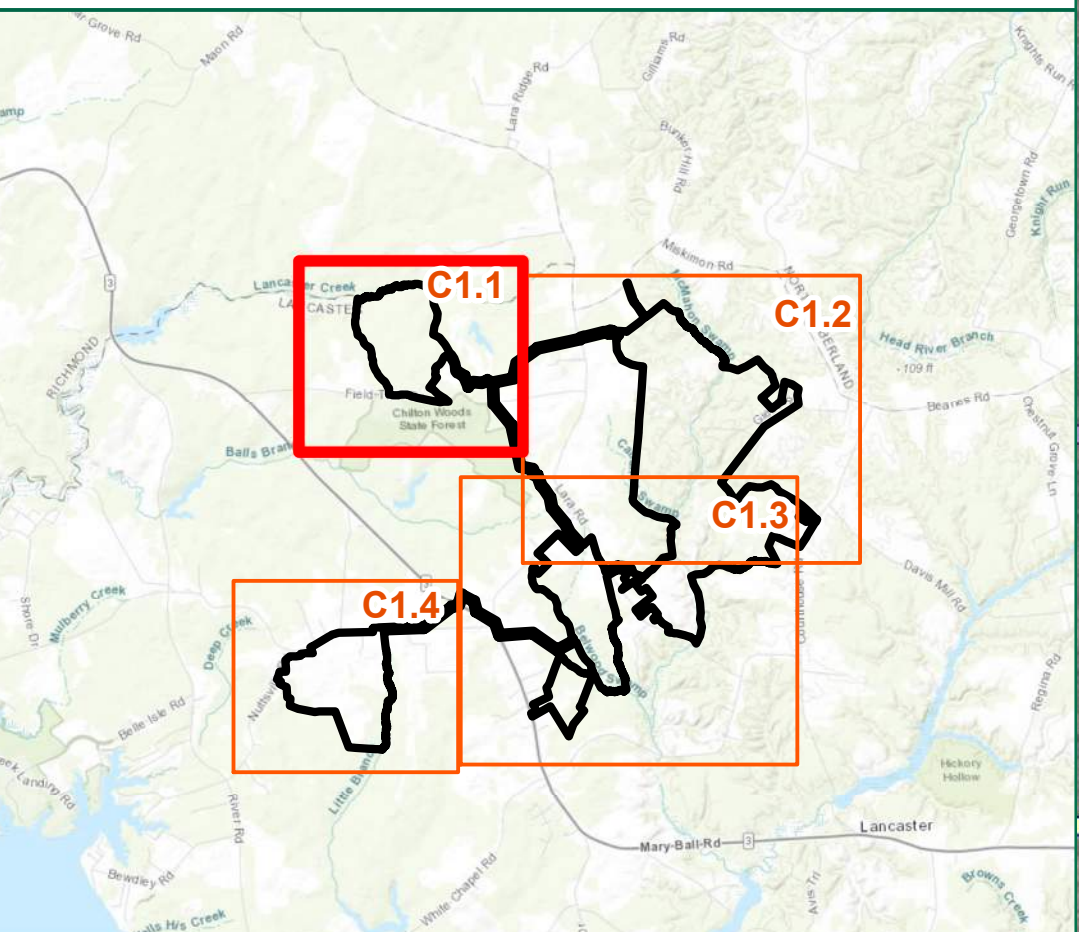
SCALE (FEET)
 0 1,200 2,400
 PLANS PRINTED AS 11X17 ARE HALF SCALE
 SCALE SHEET NUMBER
 H:1" = 1,200' C1.0



INFRASTRUCTURE DIMENSIONS	
PANELS	93.861" x 43.15" x 1.18"
INVERTERS	109.4" x 91.3" x 62.5"
SWITCHYARD	300' x 300'
SUBSTATION	300' x 200'
FENCE	6' in height with 1' of barbed wire
ROAD	16' Road with 2' shoulder on each side

- NOTES:**
- PROJECT LIMITS HAVE BEEN SURVEYED.
 - ARCHAEOLOGICAL RESOURCE BOUNDARIES DELINEATED BY DUTTON + ASSOCIATES DURING A CULTURAL RESOURCE SURVEY.
 - WETLANDS AND STREAMS HAVE BEEN DELINEATED BY TIMMONS GROUP AND CONFIRMED BY THE USACE UNDER CONFIRMATION NUMBER NAD-2021-00432.
 - RESOURCE PROTECTION AREAS HAVE BEEN DETERMINED BY TIMMONS GROUP AND ARE AWAITING CONFIRMATION FROM LANCASTER COUNTY.
 - LAYOUT IS PRELIMINARY AND IS SUBJECT TO CHANGE. PROJECT WILL BE DESIGNED AND BUILT IN ACCORDANCE WITH THE MITIGATION PLAN.
 - CONTOURS SHOWN ARE EXISTING. THE FINAL POST-CONSTRUCTION SITE MAP WILL INCLUDE FINAL GRADING IN ACCORDANCE WITH 9VAC15-60-70A.

- Legend**
- Project Parcel Boundary
 - Entrance
 - Existing Electric Transmission Line
 - Transmission Line Easement
 - Proposed Power Collection Lines
 - Internal Roads
 - Solar Arrays
 - Fence
 - Existing 10' Contours
 - Resource Protection Area
 - Delineated Stream
 - Delineated Wetland
 - FEMA Flood Zone
 - 800' Lancaster County Water Overlay District
 - Property Setbacks
 - Maximum Extent of Potential Project Improvements
- Perimeter Landscaping**
- Existing Vegetation
 - Natural Buffer



TIMMONS GROUP
 YOUR VISION ACHIEVED THROUGH OURS.
 1001 Boulders Parkway, Suite 300
 Richmond, VA 23225
 TEL 804.200.6900
 www.timmons.com

PROJECT NAME & LOCATION

WALLER SOLAR
 LANCASTER COUNTY,
 VIRGINIA

DATE	11/10/2022
PROJECT NUMBER	45249.014
PROJECT NAME	WALLER SOLAR
DESIGNED BY / DRAWN BY	L. WHEELER

NOTES

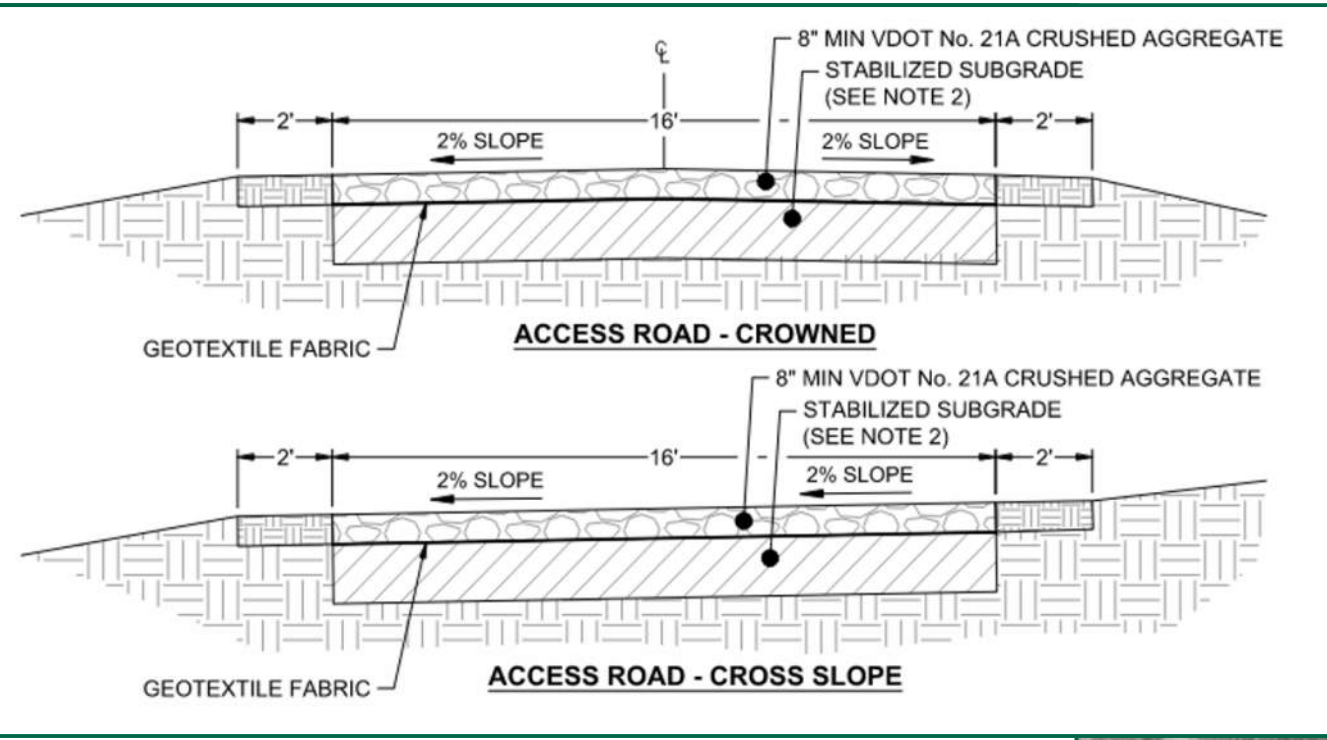
These exhibits and associated documents are the exclusive property of TIMMONS GROUP and may not be reproduced in whole or in part and shall not be used for any purpose whatsoever, inclusive, but not limited to construction, bidding, and/or construction taking without the express written consent of

REVISIONS	
#	DESCRIPTION

DRAWING DESCRIPTION
PRELIMINARY SITE PLAN

SCALE (FEET)

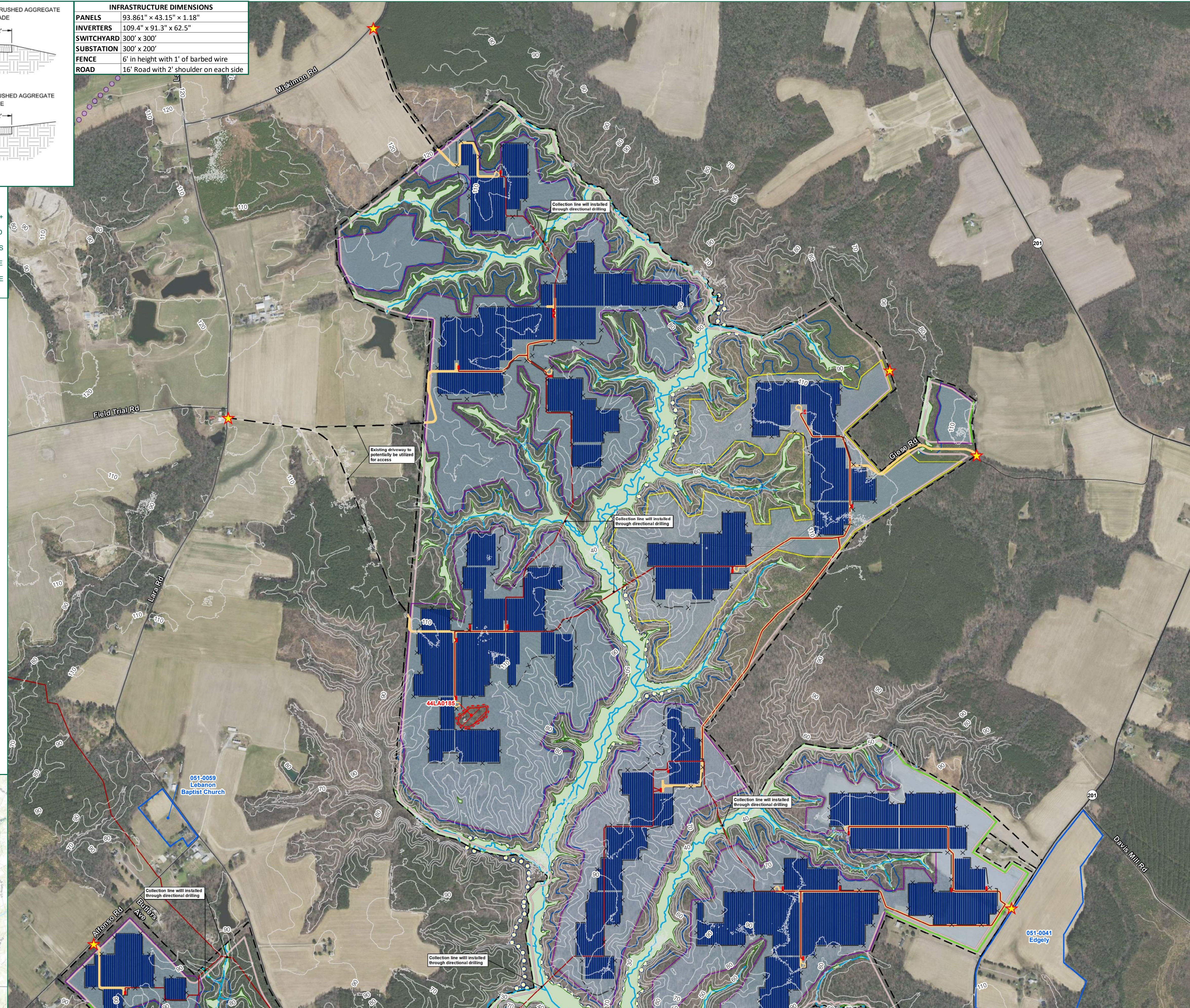
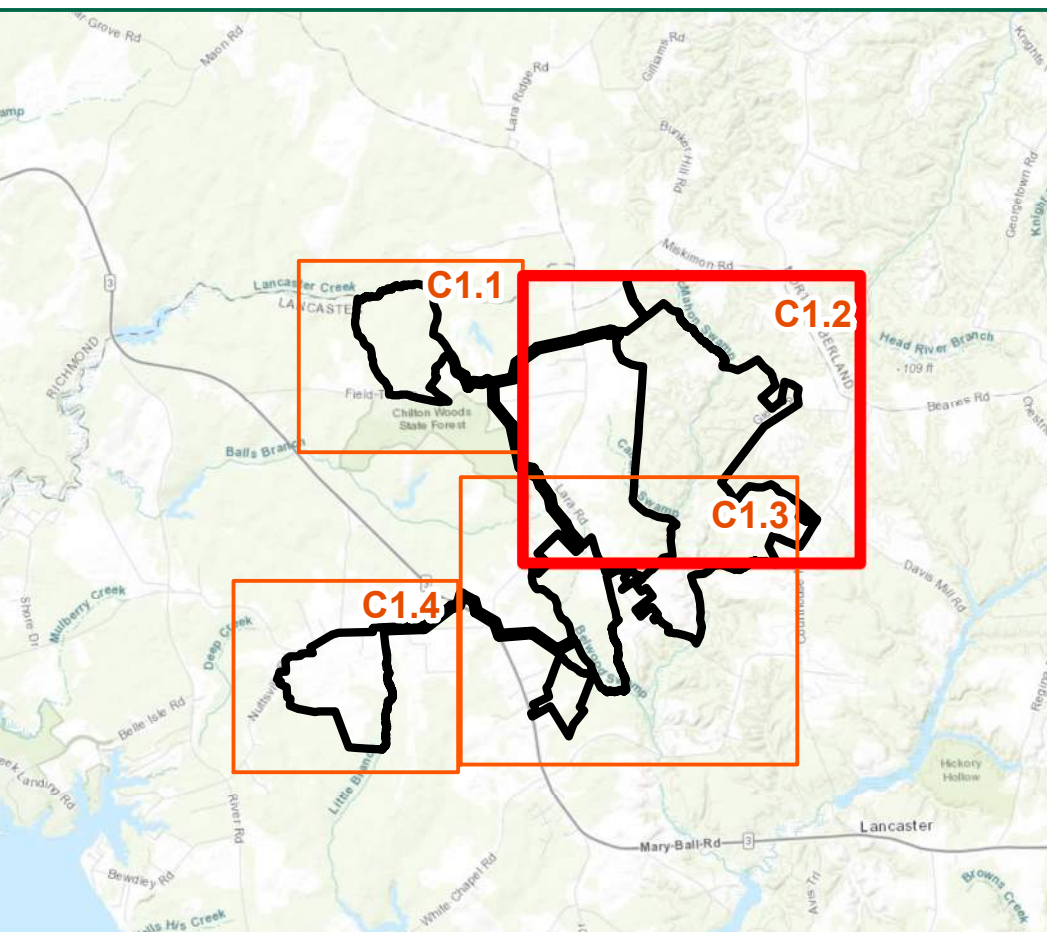
0 400 800
 PLANS PRINTED AS 1/16" ARE HALF SCALE
 SCALE SHEET NUMBER
 H:1" = 400' C1.1



INFRASTRUCTURE DIMENSIONS	
PANELS	93.861" x 43.15" x 1.18"
INVERTERS	109.4" x 91.3" x 62.5"
SWITCHYARD	300' x 300'
SUBSTATION	300' x 200'
FENCE	6' in height with 1' of barbed wire
ROAD	16' Road with 2' shoulder on each side

- NOTES:**
- PROJECT LIMITS HAVE BEEN SURVEYED.
 - ARCHAEOLOGICAL RESOURCE BOUNDARIES DELINEATED BY DUTTON + ASSOCIATES DURING A CULTURAL RESOURCE SURVEY.
 - WETLANDS AND STREAMS HAVE BEEN DELINEATED BY TIMMONS GROUP AND CONFIRMED BY THE USACE UNDER CONFIRMATION NUMBER NAD-2021-00432.
 - RESOURCE PROTECTION AREAS HAVE BEEN DETERMINED BY TIMMONS GROUP AND ARE AWAITING CONFIRMATION FROM LANCASTER COUNTY.
 - LAYOUT IS PRELIMINARY AND IS SUBJECT TO CHANGE. PROJECT WILL BE DESIGNED AND BUILT IN ACCORDANCE WITH THE MITIGATION PLAN.
 - CONTOURS SHOWN ARE EXISTING. THE FINAL POST-CONSTRUCTION SITE MAP WILL INCLUDE FINAL GRADING IN ACCORDANCE WITH 9VAC15-60-70A.

- Legend**
- Project Parcel Boundary
 - Entrance
 - Proposed Power Collection Lines
 - Internal Roads
 - Solar Arrays
 - Fence
 - Existing 10' Contours
 - Resource Protection Area
 - Delineated Stream
 - Delineated Wetland
 - FEMA Flood Zone
 - 800' Lancaster County Water Overlay District
 - Archaeological Resources
 - Architectural Resources
 - 25' Archaeological Resource Buffer
 - Property Setbacks
 - Maximum Extent of Potential Project Improvements
- Perimeter Landscaping**
- Planted Buffer
 - Existing Vegetation
 - Natural Buffer



TIMMONS GROUP
 YOUR VISION ACHIEVED THROUGH OURS.
 1001 Boulders Parkway, Suite 300
 Richmond, VA 23225
 TEL 804.200.6900
 www.timmons.com

PROJECT NAME & LOCATION
WALLER SOLAR
 LANCASTER COUNTY,
 VIRGINIA

DATE	11/10/2022
PROJECT NUMBER	45249.014
PROJECT NAME	WALLER SOLAR
DESIGNED BY / DRAWN BY	L. WHEELER

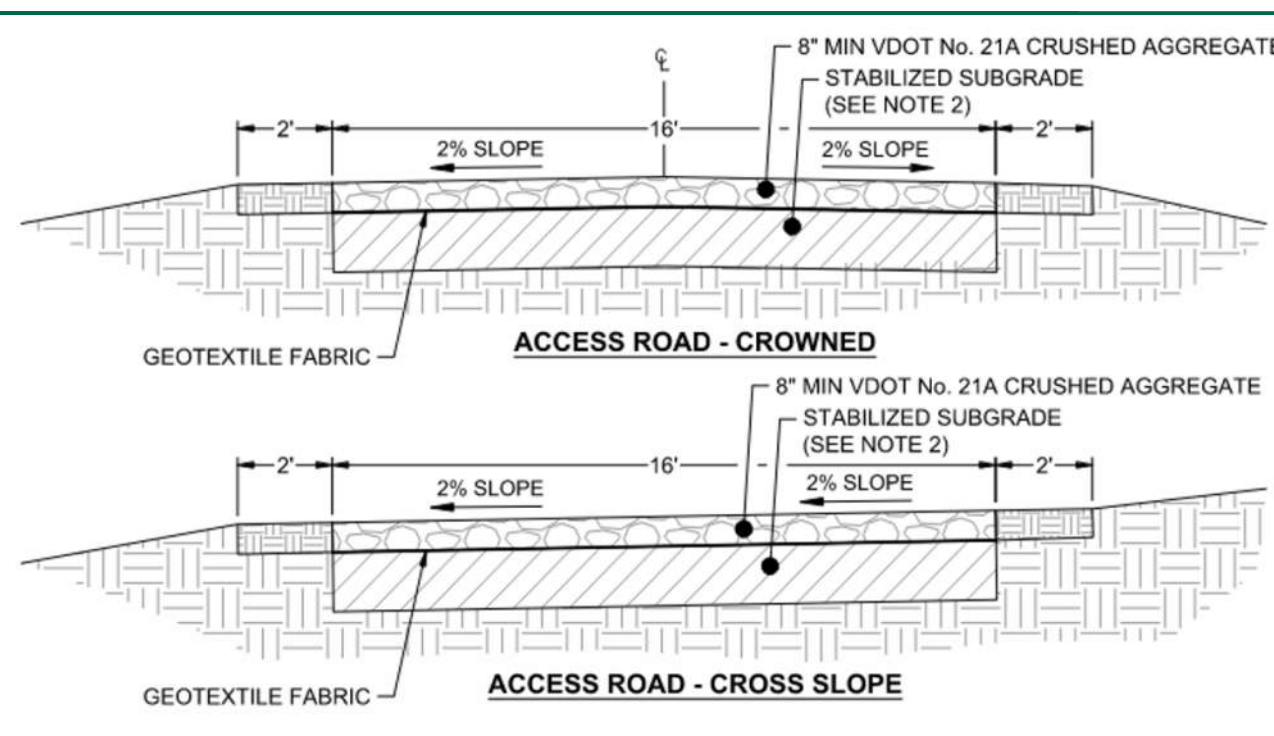
NOTES

These exhibits and associated documents are the exclusive property of TIMMONS GROUP and may not be reproduced in whole or in part and shall not be used for any purpose whatsoever, inclusive, but not limited to construction, bidding, and/or construction taking without the express written consent of

REVISIONS	
#	DESCRIPTION

DRAWING DESCRIPTION
PRELIMINARY SITE PLAN

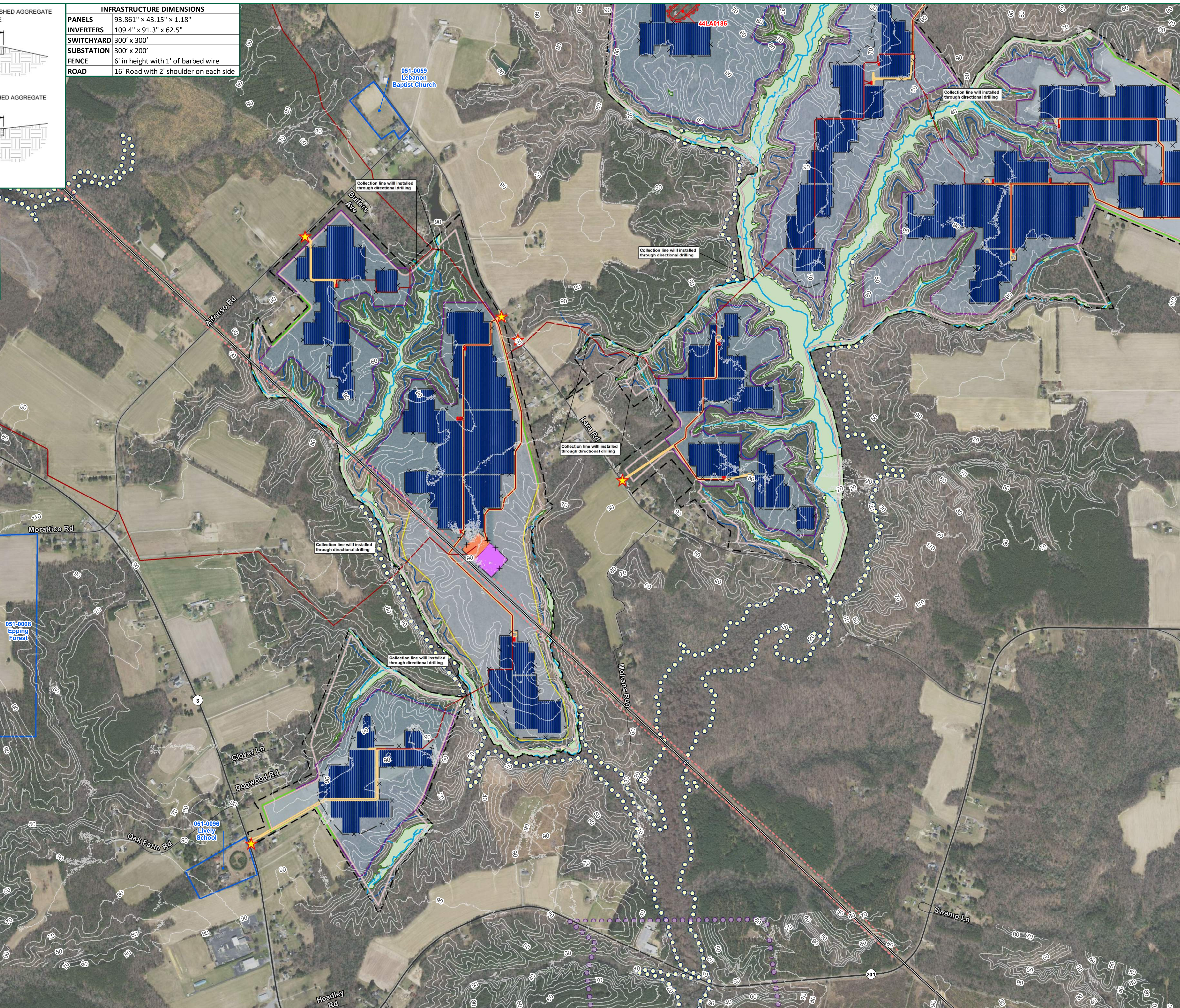
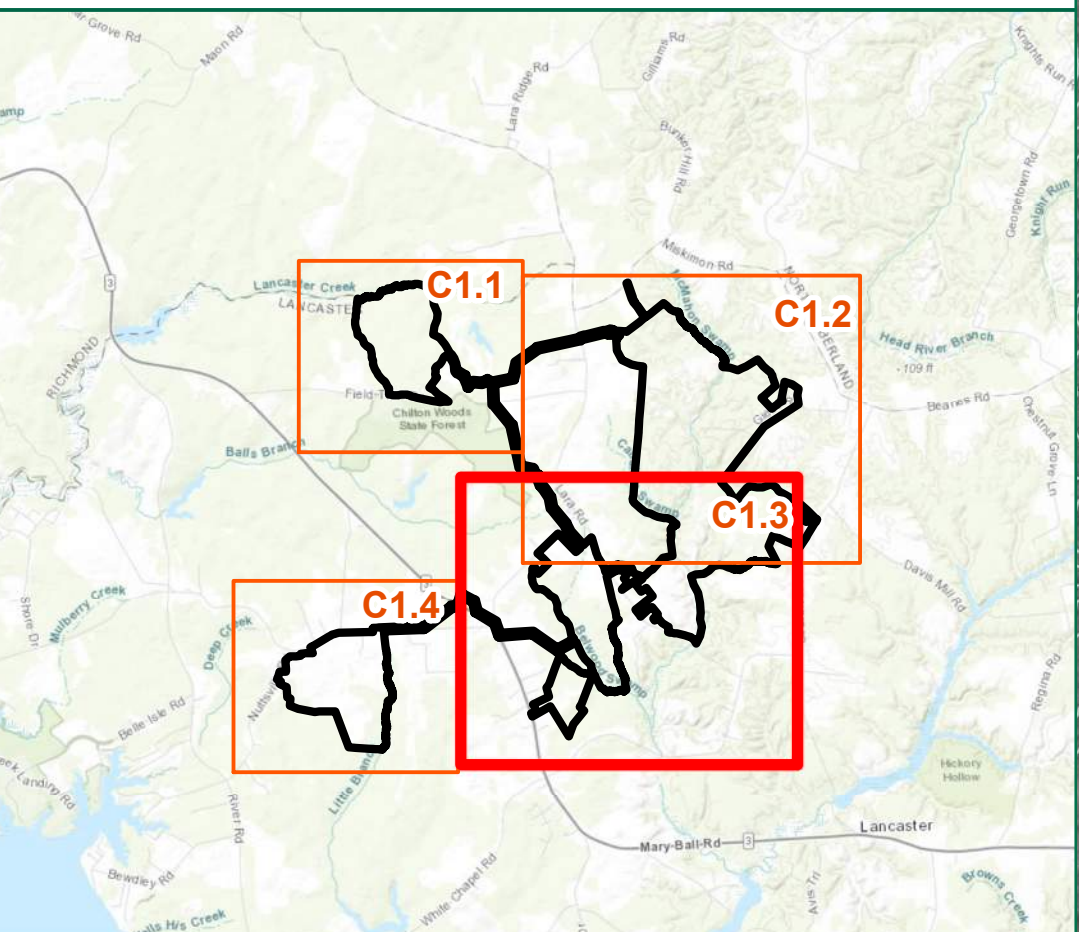
SCALE (FEET)
 0 600 1,200
 PLANS PRINTED AS 1/16" ARE HALF SCALE
 SCALE SHEET NUMBER
 H:1" = 600' C1.2



INFRASTRUCTURE DIMENSIONS	
PANELS	93.861" x 43.15" x 1.18"
INVERTERS	109.4" x 91.3" x 62.5"
SWITCHYARD	300' x 300'
SUBSTATION	300' x 200'
FENCE	6' in height with 1' of barbed wire
ROAD	16' Road with 2' shoulder on each side

- NOTES:**
- PROJECT LIMITS HAVE BEEN SURVEYED.
 - ARCHAEOLOGICAL RESOURCE BOUNDARIES DELINEATED BY DUTTON + ASSOCIATES DURING A CULTURAL RESOURCE SURVEY.
 - WETLANDS AND STREAMS HAVE BEEN DELINEATED BY TIMMONS GROUP AND CONFIRMED BY THE USACE UNDER CONFIRMATION NUMBER NAD-2021-00432.
 - RESOURCE PROTECTION AREAS HAVE BEEN DETERMINED BY TIMMONS GROUP AND ARE AWAITING CONFIRMATION FROM LANCASTER COUNTY.
 - LAYOUT IS PRELIMINARY AND IS SUBJECT TO CHANGE. PROJECT WILL BE DESIGNED AND BUILT IN ACCORDANCE WITH THE MITIGATION PLAN.
 - CONTOURS SHOWN ARE EXISTING. THE FINAL POST-CONSTRUCTION SITE MAP WILL INCLUDE FINAL GRADING IN ACCORDANCE WITH 9VAC15-60-70A.

- Legend**
- Project Parcel Boundary
 - Entrance
 - Existing Electric Transmission Line
 - Transmission Line Easement
 - Proposed Power Collection Lines
 - Internal Roads
 - Solar Arrays
 - Substation
 - Switchyard
 - Fence
 - Existing 10' Contours
 - Resource Protection Area
 - Delineated Stream
 - Delineated Wetland
 - FEMA Flood Zone
 - 800' Lancaster County Water Overlay District
 - Archaeological Resources
 - Architectural Resources
 - 25' Archaeological Resource Buffer
 - Property Setbacks
 - Maximum Extent of Potential Project Improvements
- Perimeter Landscaping**
- Planted Buffer
 - Existing Vegetation
 - Natural Buffer



TIMMONS GROUP
 YOUR VISION ACHIEVED THROUGH OURS.
 1001 Boulders Parkway, Suite 300
 Richmond, VA 23225
 TEL 804.200.6900
 www.timmons.com

PROJECT NAME & LOCATION
WALLER SOLAR
 LANCASTER COUNTY,
 VIRGINIA

DATE: 11/10/2022
 PROJECT NUMBER: 45249.014
 PROJECT NAME: WALLER SOLAR
 DESIGNED BY / DRAWN BY: L. WHEELER

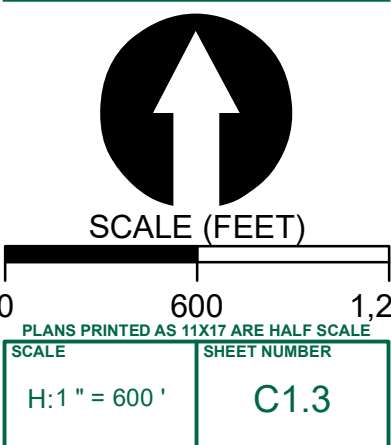
NOTES

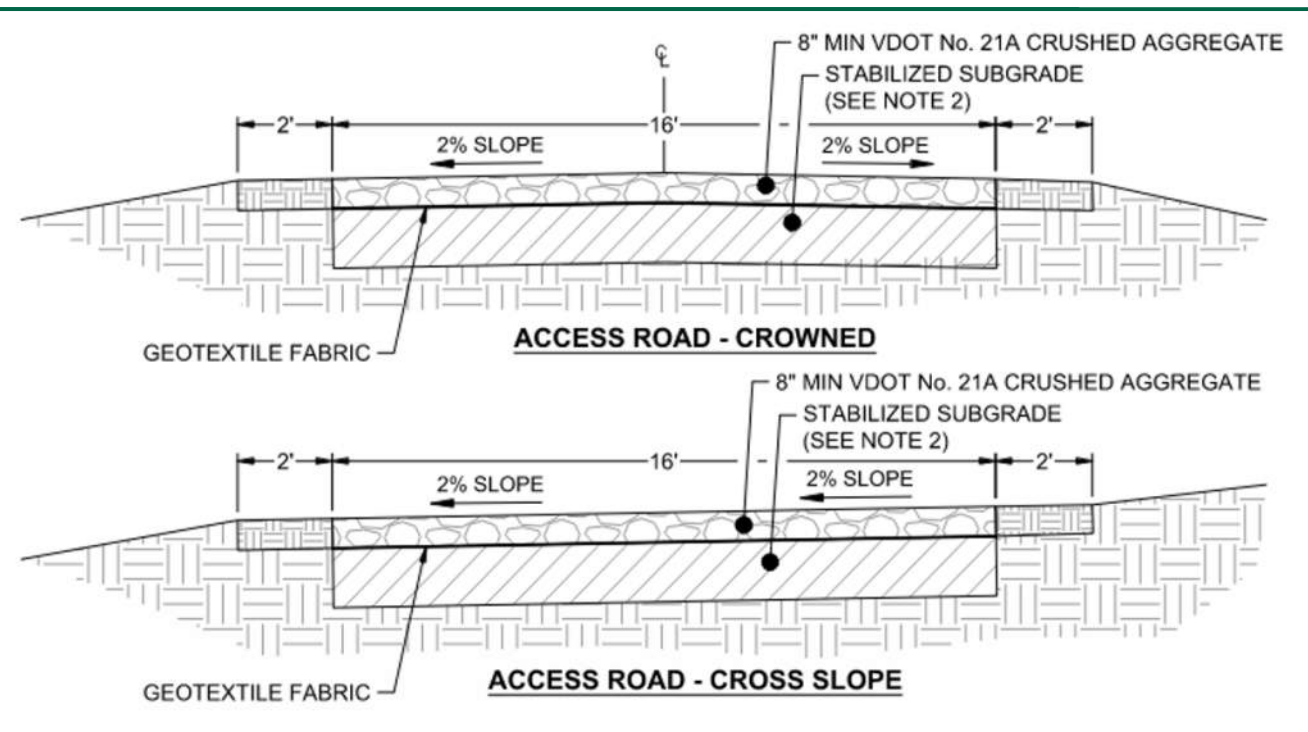
These exhibits and associated documents are the exclusive property of TIMMONS GROUP and may not be reproduced in whole or in part and shall not be used for any purpose whatsoever, inclusive, but not limited to construction, bidding, and/or construction taking without the express written consent of

REVISIONS

#	DATE	DESCRIPTION

DRAWING DESCRIPTION
PRELIMINARY SITE PLAN





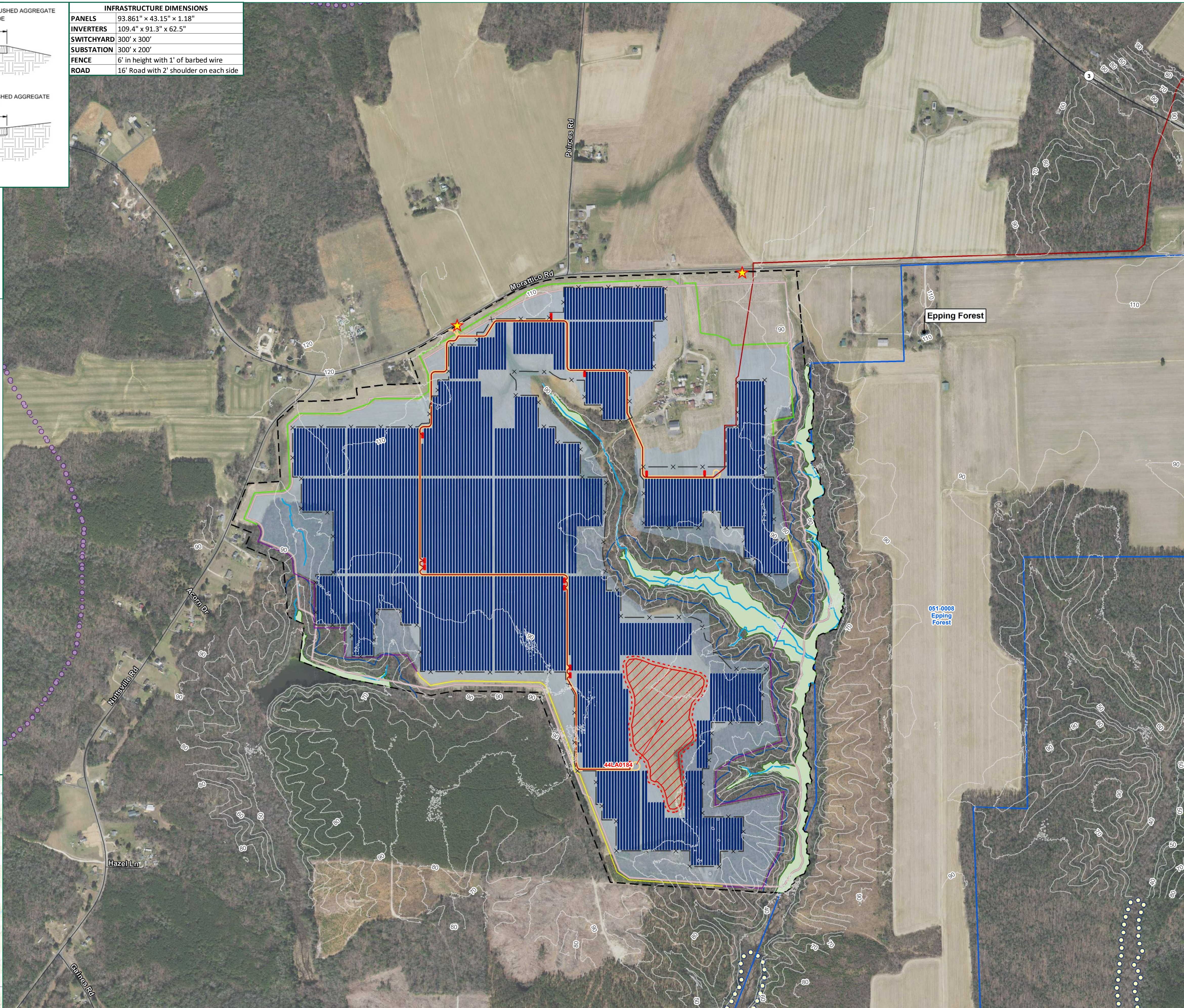
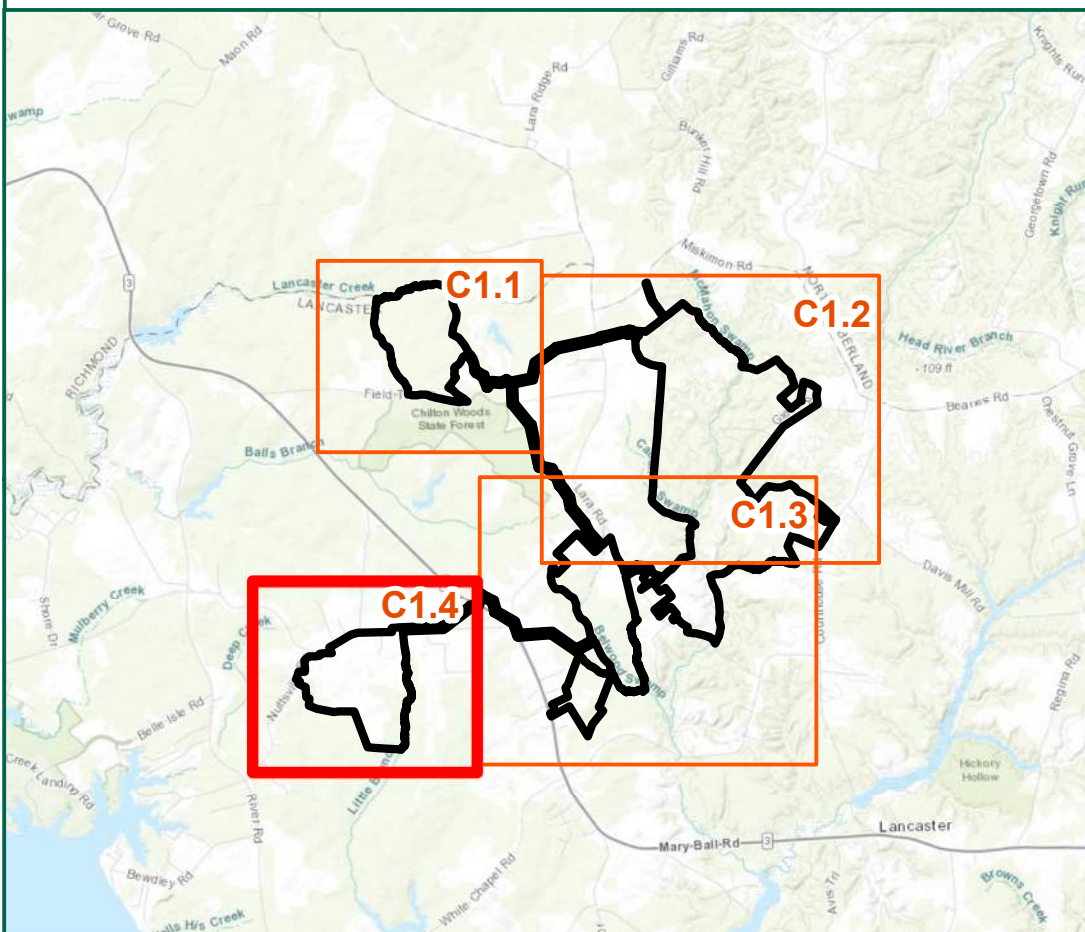
INFRASTRUCTURE DIMENSIONS	
PANELS	93.861" x 43.15" x 1.18"
INVERTERS	109.4" x 91.3" x 62.5"
SWITCHYARD	300' x 300'
SUBSTATION	300' x 200'
FENCE	6' in height with 1' of barbed wire
ROAD	16' Road with 2' shoulder on each side

NOTES:

1. PROJECT LIMITS HAVE BEEN SURVEYED.
2. ARCHAEOLOGICAL RESOURCE BOUNDARIES DELINEATED BY DUTTON + ASSOCIATES DURING A CULTURAL RESOURCE SURVEY.
3. WETLANDS AND STREAMS HAVE BEEN DELINEATED BY TIMMONS GROUP AND CONFIRMED BY THE USACE UNDER CONFIRMATION NUMBER NAD-2021-00432.
4. RESOURCE PROTECTION AREAS HAVE BEEN DETERMINED BY TIMMONS GROUP AND ARE AWAITING CONFIRMATION FROM LANCASTER COUNTY.
5. LAYOUT IS PRELIMINARY AND IS SUBJECT TO CHANGE. PROJECT WILL BE DESIGNED AND BUILT IN ACCORDANCE WITH THE MITIGATION PLAN.
6. CONTOURS SHOWN ARE EXISTING. THE FINAL POST-CONSTRUCTION SITE MAP WILL INCLUDE FINAL GRADING IN ACCORDANCE WITH 9VAC15-60-70A.

Legend

- Project Parcel Boundary
- Entrance
- Proposed Power Collection Lines
- Internal Roads
- Solar Arrays
- Fence
- Existing 10' Contours
- Resource Protection Area
- Delineated Stream
- Delineated Wetland
- FEMA Flood Zone
- 800' Lancaster County Water Overlay District
- Archaeological Resources
- Architectural Resources
- 25' Archaeological Resource Buffer
- Property Setbacks
- Maximum Extent of Potential Project Improvements
- Perimeter Landscaping**
- Planted Buffer
- Existing Vegetation
- Natural Buffer



TIMMONS GROUP
 YOUR VISION ACHIEVED THROUGH OURS.
 1001 Boulders Parkway, Suite 300
 Richmond, VA 23225
 TEL 804-200-6900
 www.timmons.com

PROJECT NAME & LOCATION
WALLER SOLAR
 LANCASTER COUNTY,
 VIRGINIA

DATE	11/10/2022
PROJECT NUMBER	45249.014
PROJECT NAME	WALLER SOLAR
DESIGNED BY / DRAWN BY	L. WHEELER

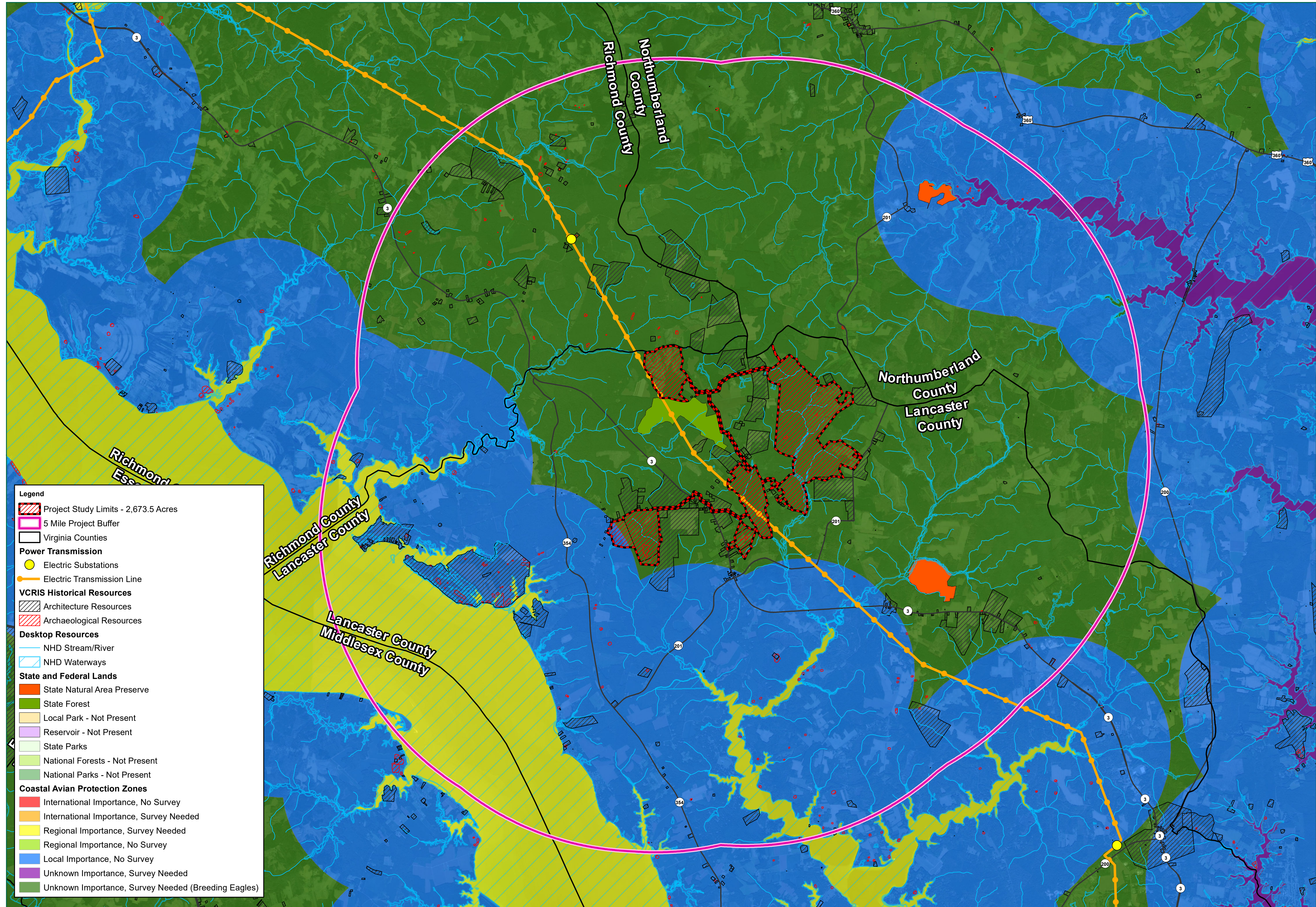
NOTES

These exhibits and associated documents are the exclusive property of TIMMONS GROUP and may not be reproduced in whole or in part and shall not be used for any purpose whatsoever, inclusive, but not limited to construction, bidding, and/or construction taking without the express written consent of

#	DATE	DESCRIPTION

DRAWING DESCRIPTION
PRELIMINARY SITE PLAN

SCALE (FEET)
 0 400 800
 PLANS PRINTED AS 11X17 ARE HALF SCALE
 SCALE SHEET NUMBER
 H:1" = 400' C1.4



Legend

- Project Study Limits - 2,673.5 Acres
- 5 Mile Project Buffer
- Virginia Counties
- Power Transmission**
- Electric Substations
- Electric Transmission Line
- VCRIS Historical Resources**
- Architecture Resources
- Archaeological Resources
- Desktop Resources**
- NHD Stream/River
- NHD Waterways
- State and Federal Lands**
- State Natural Area Preserve
- State Forest
- Local Park - Not Present
- Reservoir - Not Present
- State Parks
- National Forests - Not Present
- National Parks - Not Present
- Coastal Avian Protection Zones**
- International Importance, No Survey
- International Importance, Survey Needed
- Regional Importance, Survey Needed
- Regional Importance, No Survey
- Local Importance, No Survey
- Unknown Importance, Survey Needed
- Unknown Importance, Survey Needed (Breeding Eagles)

TIMMONS GROUP
 YOUR VISION ACHIEVED THROUGH OURS.
 1001 Builders Parkway, Suite 300
 Richmond, VA 23225
 TEL: 804-200-6500
 www.timmons.com

WALLER SOLAR
 LANCASTER COUNTY,
 VIRGINIA

DATE	11/08/2022
PROJECT NUMBER	45249.014
PROJECT NAME	WALLER SOLAR
DESIGNED BY / DRAWN BY	L. WHEELER

NOTES:
 Project Limits are approximate.
 Cultural Resource data from DHR.
 Local, state, and federal lands data from DCR and USGS.
 Waterways data from USGS.
 Aerial imagery from VGIN.
 CAPZ data from Coastal Gems.

These plans and associated documents are the exclusive property of TIMMONS GROUP and may not be reproduced in whole or in part and shall not be used for any purpose whatsoever, inclusive, but not limited to construction, bidding, and/or construction staking without the express written consent of TIMMONS GROUP.

REVISIONS	
#	DATE/DESCRIPTION

DRAWING DESCRIPTION
 CONTEXT MAP

SCALE (FEET)

0 4,000 8,000

PLANS PRINTED AS 11X17 ARE HALF SCALE

SCALE	SHEET NUMBER
H:1" = 4,000'	1