

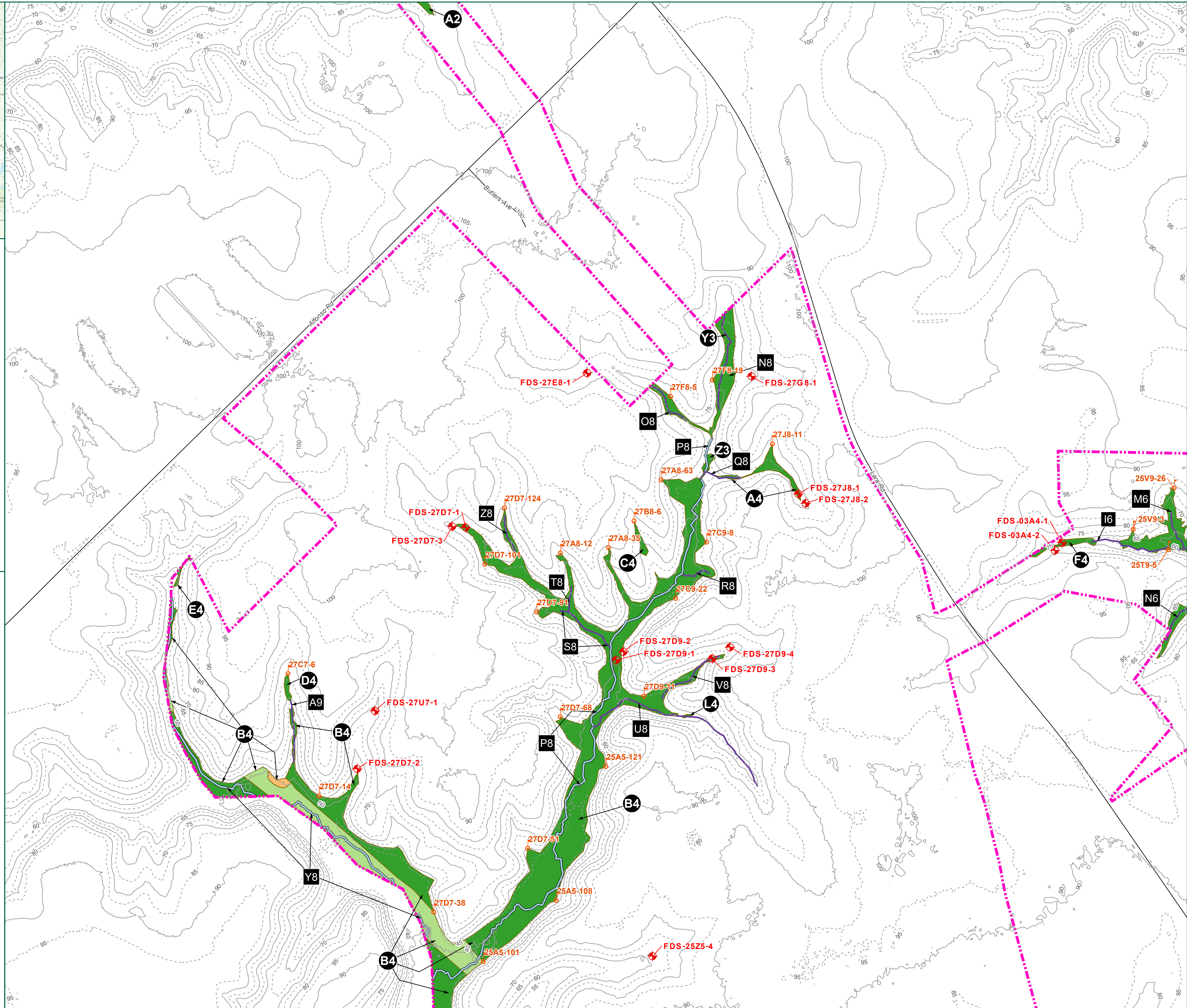
See Page 20 for Resource Identification Table

Legend

- Project Study Limits- 2,764.3 Acres
- Stream Identifier
- Wetland Identifier
- Wetland Flag
- Field Data Station
- Perennial Stream (R3)
- Intermittent Stream (R4)
- Ephemeral Stream (R6)
- Culvert
- Palustrine Open Water (POW)
- Palustrine Emergent (PEM) Wetlands
- Palustrine Forested (PFO) Wetlands
- Palustrine Scrub-Shrub (PSS) Wetlands

Topographic Contours

- Major- 10 Foot
- Minor- 5 Foot



TIMMONS GROUP
 YOUR VISION ACHIEVED THROUGH OURS.
 1001 Boulders Parkway, Suite 300
 Richmond, VA 23225
 TEL: 804.200.6500
 www.timmons.com

WALLER SOLAR
 LANCASTER COUNTY,
 VIRGINIA

PROJECT NAME & LOCATION

DATE: 07/16/2020

PROJECT NUMBER: 38786.008

PROJECT NAME: WALLER SOLAR

DESIGNED BY / DRAWN BY: M. COOLEY

1. Waters of the U.S. within the project study limits have been located using submeter, Bluetooth GPS antennas by Timmons Group.
2. Waters of the U.S. have not been confirmed by the U.S. Army Corps of Engineers until stamped.
3. Project limits are approximate.
4. Topography based on USGS LIDAR.
5. Cowardin Stream Classifications are based solely on field observations for most depicted features. See Figure 5 for reaches which had formal assessment.

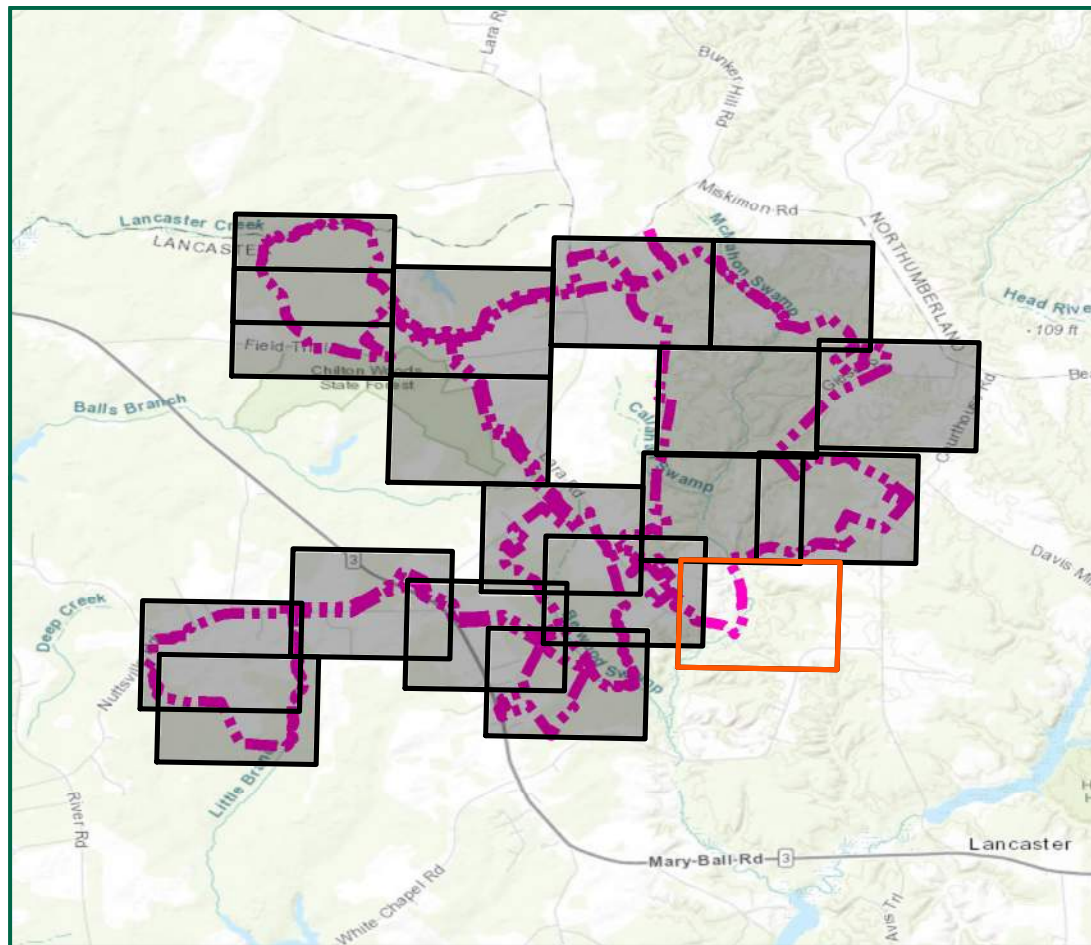
These plans and associated documents are the exclusive property of TIMMONS GROUP and shall not be reproduced in whole or in part and shall not be used for any purpose whatsoever, inclusive, but not limited to construction, bidding, and/or construction staking without the express written consent of TIMMONS GROUP.

#	MMDDYY	DESCRIPTION

DRAWING DESCRIPTION
**FIGURE 4:
 WETLANDS AND
 WATERS OF THE
 U.S. DELINEATION
 MAP**

SCALE (FEET)

0 200 400
 PLANS PRINTED AS 11X17 ARE HALF SCALE
 SCALE SHEET NUMBER
 H:1" = 200' 12 of 20



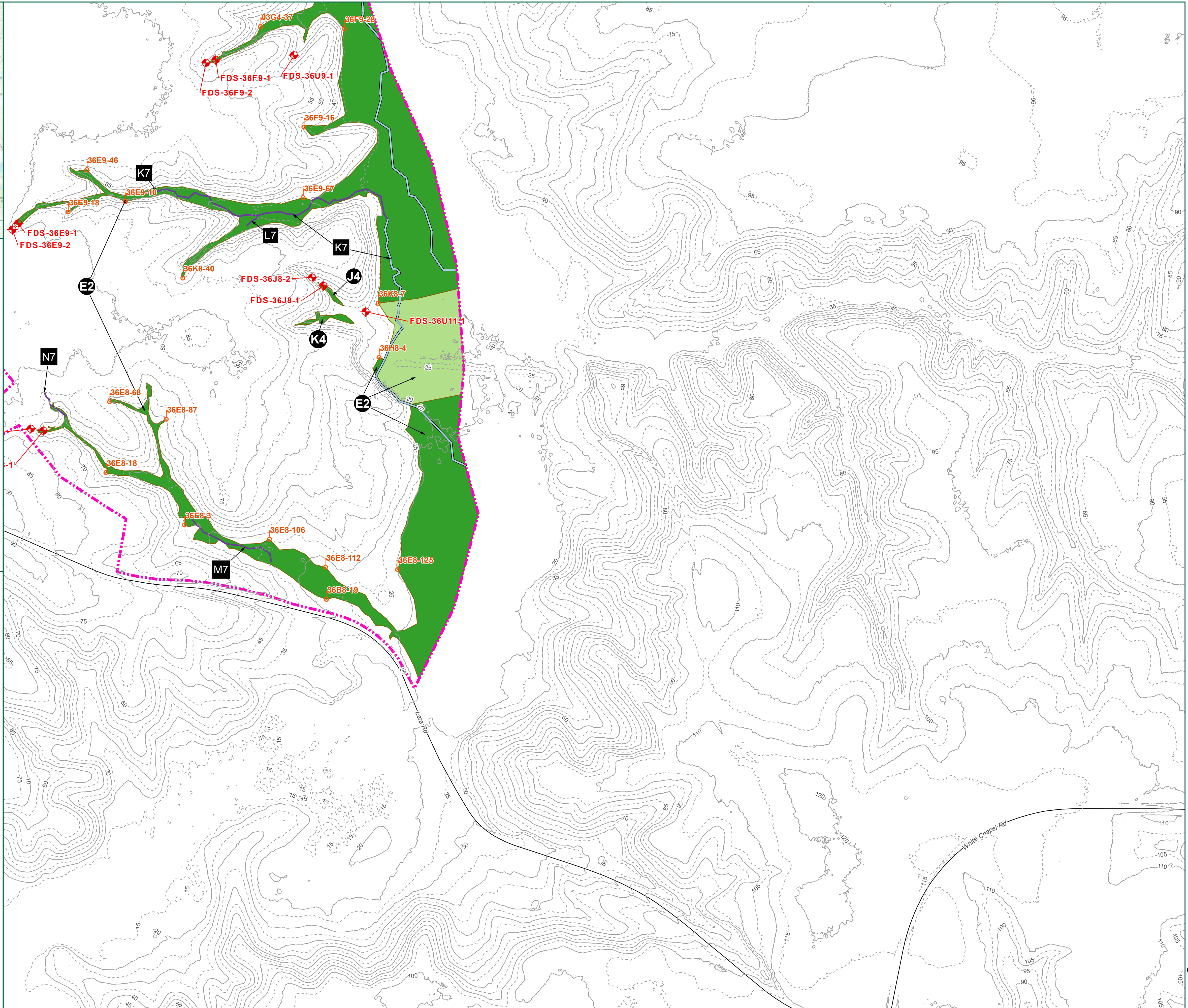
See Page 20 for Resource Identification Table

Legend

- Project Study Limits- 2,764.3 Acres
- Stream Identifier
- Wetland Identifier
- Wetland Flag
- Field Data Station
- Perennial Stream (R3)
- Intermittent Stream (R4)
- Ephemeral Stream (R6)
- Culvert
- Palustrine Open Water (POW)
- Palustrine Emergent (PEM) Wetlands
- Palustrine Forested (PFO) Wetlands
- Palustrine Scrub-Shrub (PSS) Wetlands

Topographic Contours

- Major- 10 Foot
- Minor- 5 Foot



TIMMONS GROUP
 YOUR VISION ACHIEVED THROUGH OURS.
 1001 Boulders Parkway, Suite 300
 Richmond, VA 23225
 TEL 804.200.6500
 www.timmons.com

PROJECT NAME & LOCATION
WALLER SOLAR
 LANCASTER COUNTY,
 VIRGINIA

DATE: 07/16/2020
 PROJECT NUMBER: 38786.008
 PROJECT NAME: WALLER SOLAR
 DESIGNED BY / DRAWN BY: M. COOLEY

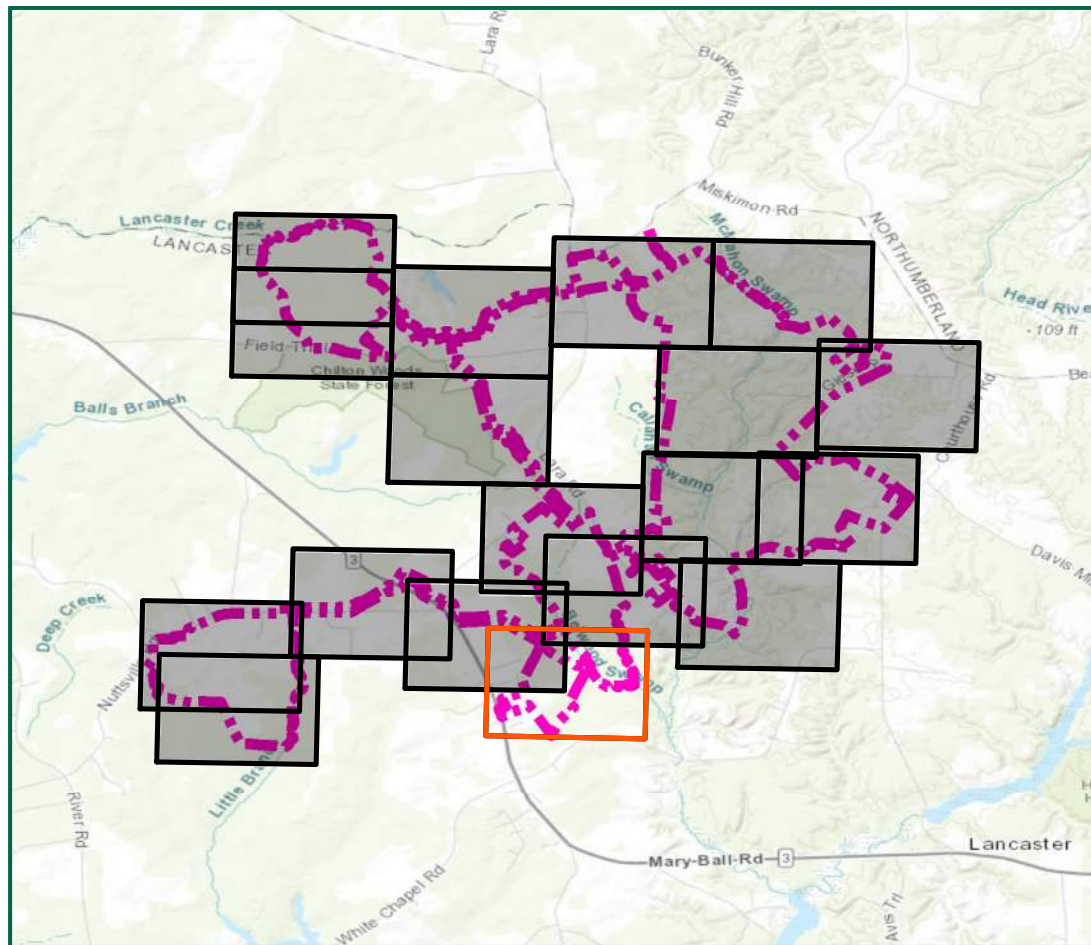
1. Waters of the U.S. within the project study limits have been located using submeter, Bluetooth GPS antennas by Timmons Group.
2. Waters of the U.S. have not been confirmed by the U.S. Army Corps of Engineers until stamped.
3. Project limits are approximate.
4. Topography based on USGS LIDAR.
5. Cowardin Stream Classifications are based solely on field observations for most depicted features. See Figure 5 for reaches which had formal assessment.

These plans and associated documents are the exclusive property of TIMMONS GROUP and shall not be used for any purpose whatsoever, inclusive, but not limited to construction, bidding, and/or construction taking without the express written consent of TIMMONS GROUP.

REVISIONS	
#	DESCRIPTION

DRAWING DESCRIPTION
FIGURE 4:
 WETLANDS AND
 WATERS OF THE
 U.S. DELINEATION
 MAP

SCALE (FEET)
 0 200 400
 PLANS PRINTED AS 11X17 ARE HALF SCALE
 SCALE SHEET NUMBER
 H:1" = 200' 14 of 20



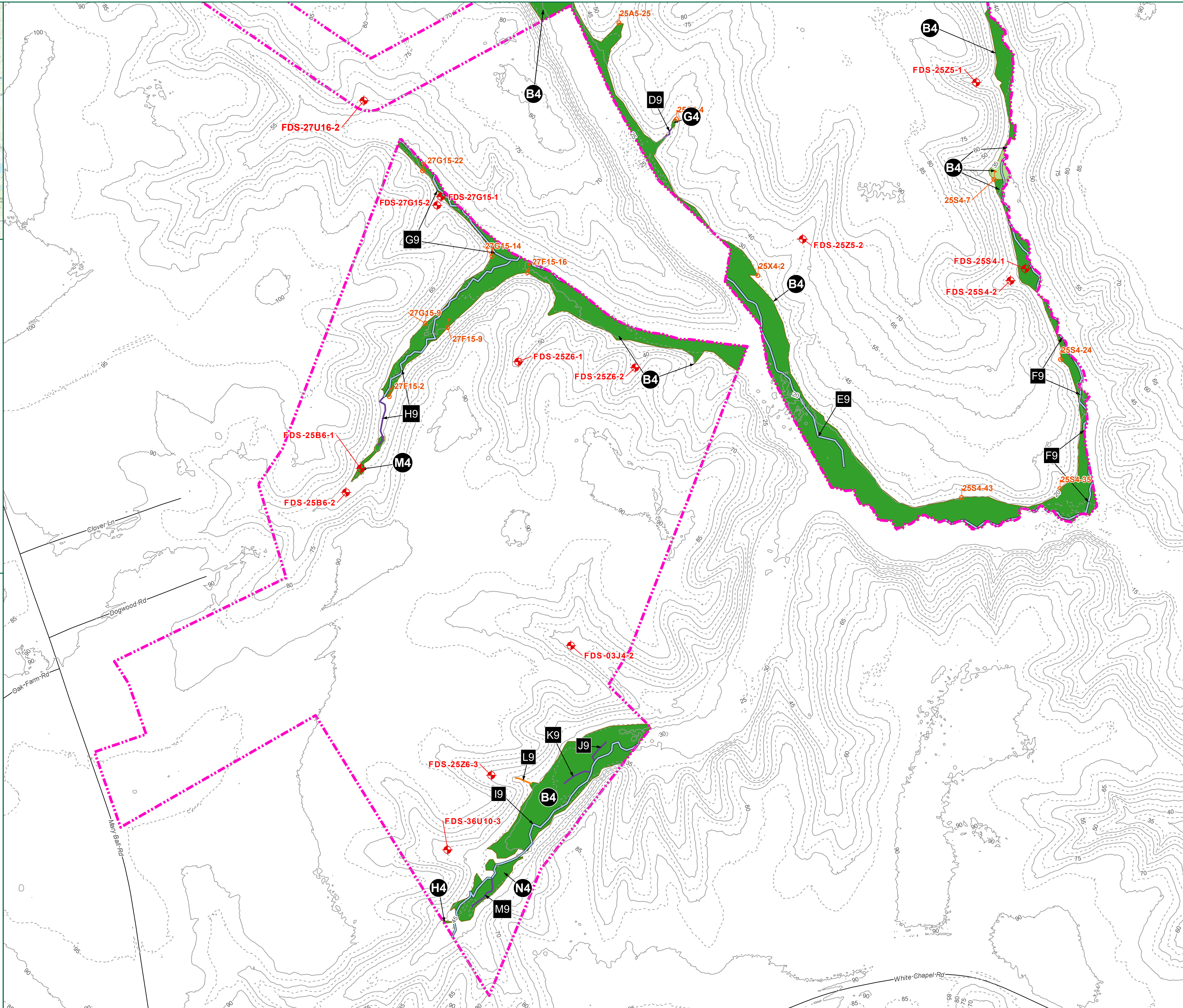
See Page 20 for Resource Identification Table

Legend

- Project Study Limits- 2,764.3 Acres
- Stream Identifier
- Wetland Identifier
- + Wetland Flag
- + Field Data Station
- Perennial Stream (R3)
- Intermittent Stream (R4)
- Ephemeral Stream (R6)
- Culvert
- Palustrine Open Water (POW)
- Palustrine Emergent (PEM) Wetlands
- Palustrine Forested (PFO) Wetlands
- Palustrine Scrub-Shrub (PSS) Wetlands

Topographic Contours

- Major- 10 Foot
- Minor- 5 Foot



TIMMONS GROUP
 YOUR VISION ACHIEVED THROUGH OURS.
 1001 Boulders Parkway, Suite 300
 Richmond, VA 23225
 TEL: 804.200.6500
 www.timmons.com

PROJECT NAME & LOCATION
WALLER SOLAR
 LANCASTER COUNTY,
 VIRGINIA

DATE	07/16/2020
PROJECT NUMBER	38786.008
PROJECT NAME	WALLER SOLAR
DESIGNED BY / DRAWN BY	M.COOLEY

1. Waters of the U.S. within the project study limits have been located using submeter, Bluetooth GPS antennas by Timmons Group.
2. Waters of the U.S. have not been confirmed by the U.S. Army Corps of Engineers until stamped.
3. Project limits are approximate.
4. Topography based on USGS LIDAR.
5. Cowardin Stream Classifications are based solely on field observations for most depicted features. See Figure 5 for reaches which had formal assessment.

These plans and associated documents are the exclusive property of TIMMONS GROUP and shall not be reproduced in whole or in part and shall not be used for any purpose whatsoever, inclusive, but not limited to construction, bidding, and/or construction staking without the express written consent of TIMMONS GROUP.

REVISIONS	
#	DESCRIPTION

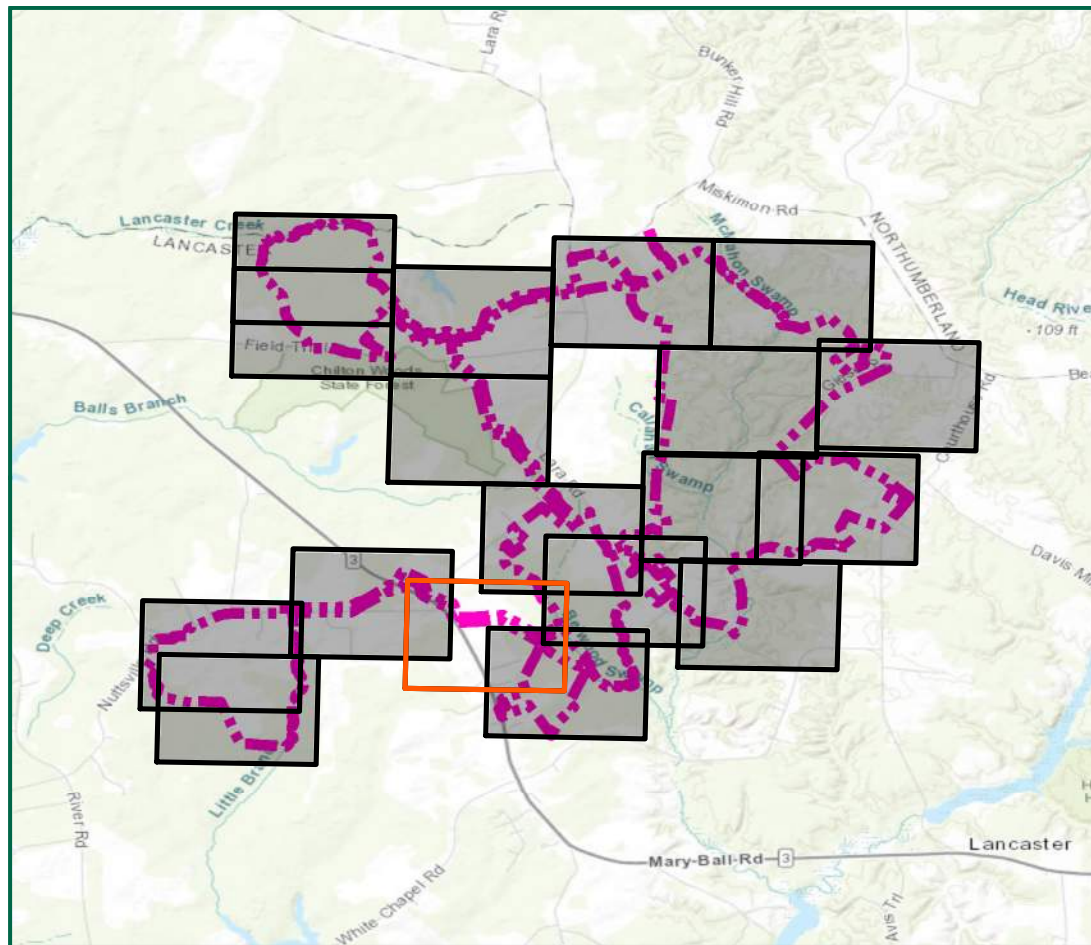
DRAWING DESCRIPTION
FIGURE 4:
 WETLANDS AND
 WATERS OF THE
 U.S. DELINEATION
 MAP

SCALE (FEET)

0 200 400

PLANS PRINTED AS 11X17 ARE HALF SCALE

SCALE	SHEET NUMBER
H:1" = 200'	15 of 20



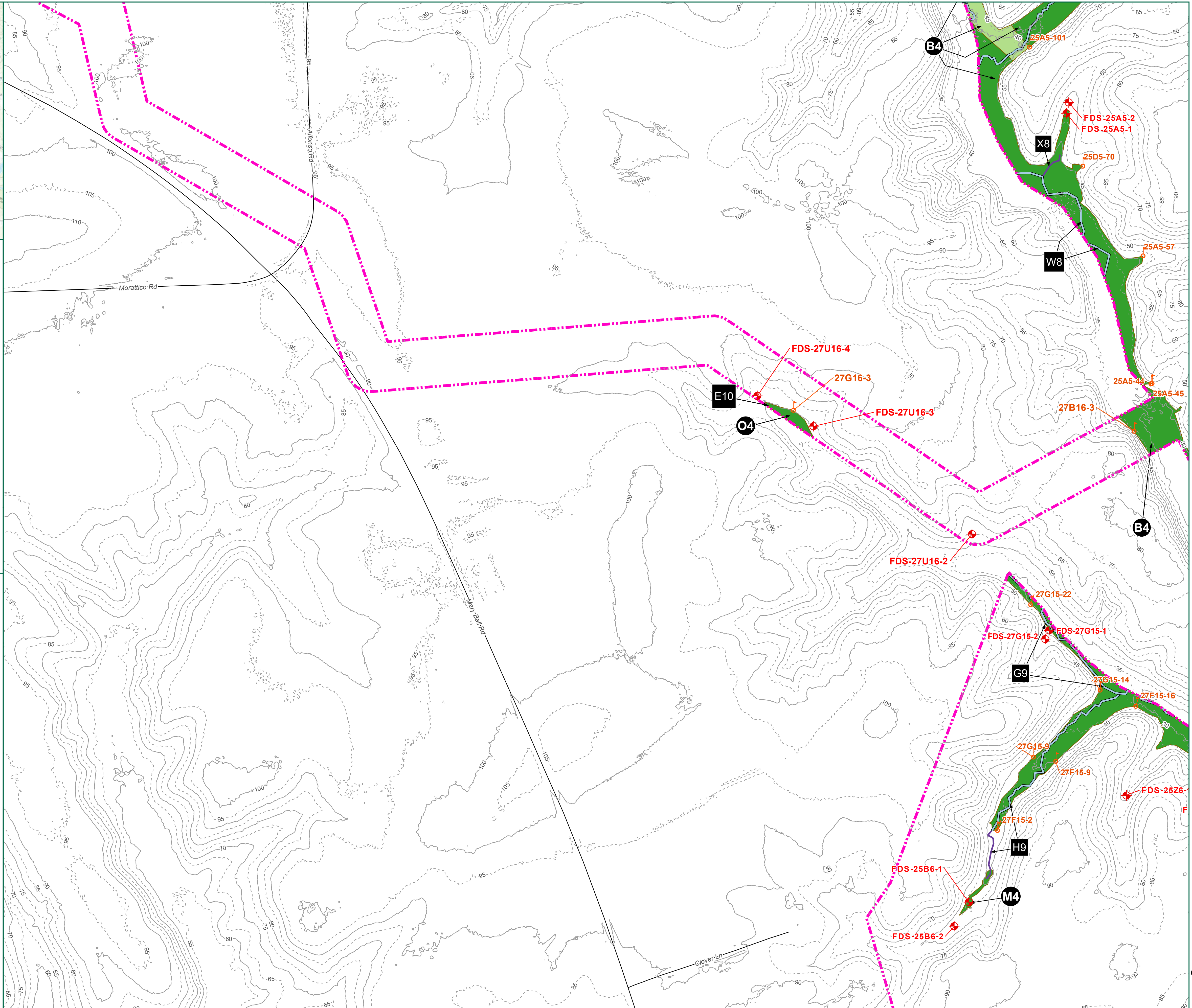
See Page 20 for Resource Identification Table

Legend

- Project Study Limits- 2,764.3 Acres
- Stream Identifier
- Wetland Identifier
- Wetland Flag
- Field Data Station
- Perennial Stream (R3)
- Intermittent Stream (R4)
- Ephemeral Stream (R6)
- Culvert
- Palustrine Open Water (POW)
- Palustrine Emergent (PEM) Wetlands
- Palustrine Forested (PFO) Wetlands
- Palustrine Scrub-Shrub (PSS) Wetlands

Topographic Contours

- Major- 10 Foot
- Minor- 5 Foot



TIMMONS GROUP
 YOUR VISION ACHIEVED THROUGH OURS.
 1001 Boulders Parkway, Suite 300
 Richmond, VA 23225
 TEL 804.200.6500
 www.timmons.com

PROJECT NAME & LOCATION
WALLER SOLAR
 LANCASTER COUNTY,
 VIRGINIA

DATE: 07/16/2020
 PROJECT NUMBER: 38786.008
 PROJECT NAME: WALLER SOLAR
 DESIGNED BY / DRAWN BY: M. COOLEY

1. Waters of the U.S. within the project study limits have been located using submeter, Bluetooth GPS antennas by Timmons Group.
2. Waters of the U.S. have not been confirmed by the U.S. Army Corps of Engineers until stamped.
3. Project limits are approximate.
4. Topography based on USGS LIDAR.
5. Cowardin Stream Classifications are based solely on field observations for most depicted features. See Figure 5 for reaches which had formal assessment.

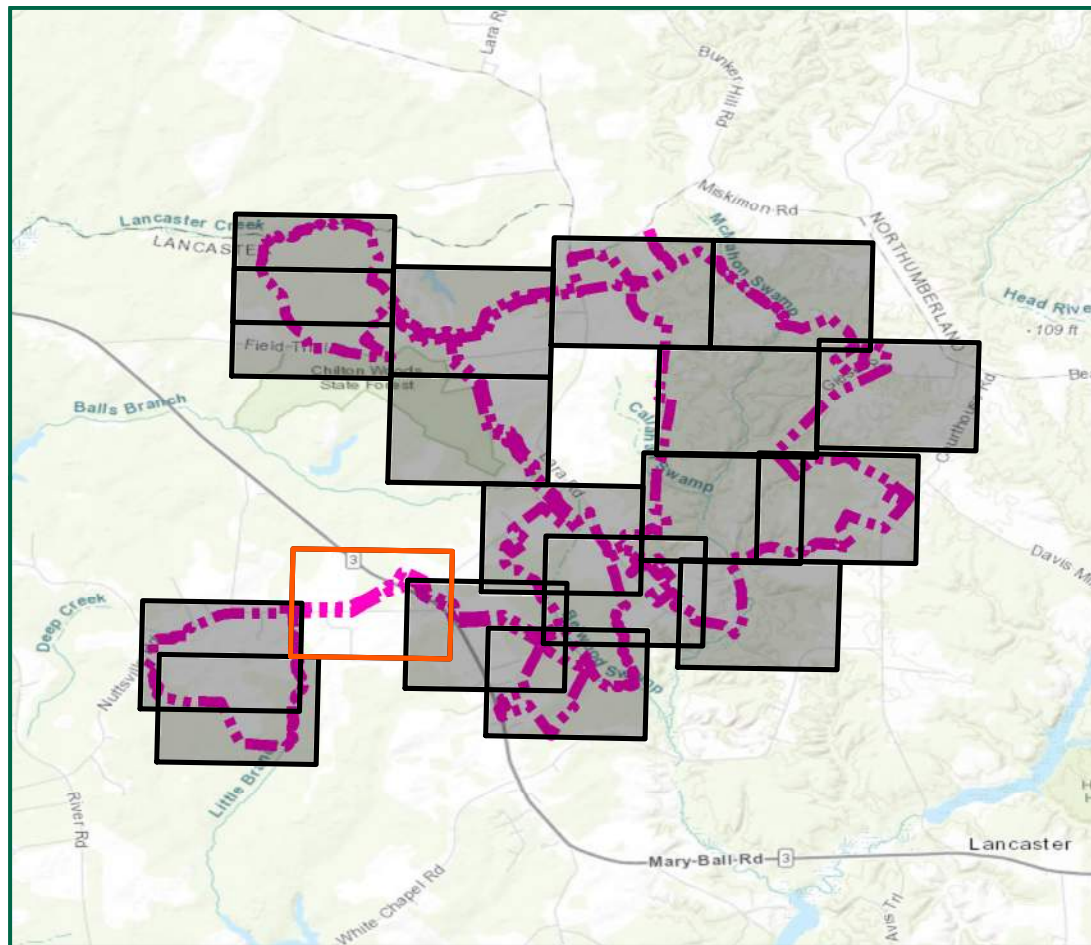
These plans and associated documents are the exclusive property of TIMMONS GROUP and may not be reproduced in whole or in part and shall not be used for any purpose whatsoever, inclusive, but not limited to construction, bidding, and/or construction staking without the express written consent of TIMMONS GROUP.

REVISIONS	
#	DESCRIPTION

DRAWING DESCRIPTION
FIGURE 4:
 WETLANDS AND
 WATERS OF THE
 U.S. DELINEATION
 MAP

SCALE (FEET)

0 200 400
 PLANS PRINTED AS 11X17 ARE HALF SCALE
 SCALE SHEET NUMBER
 H:1" = 200' 16 of 20



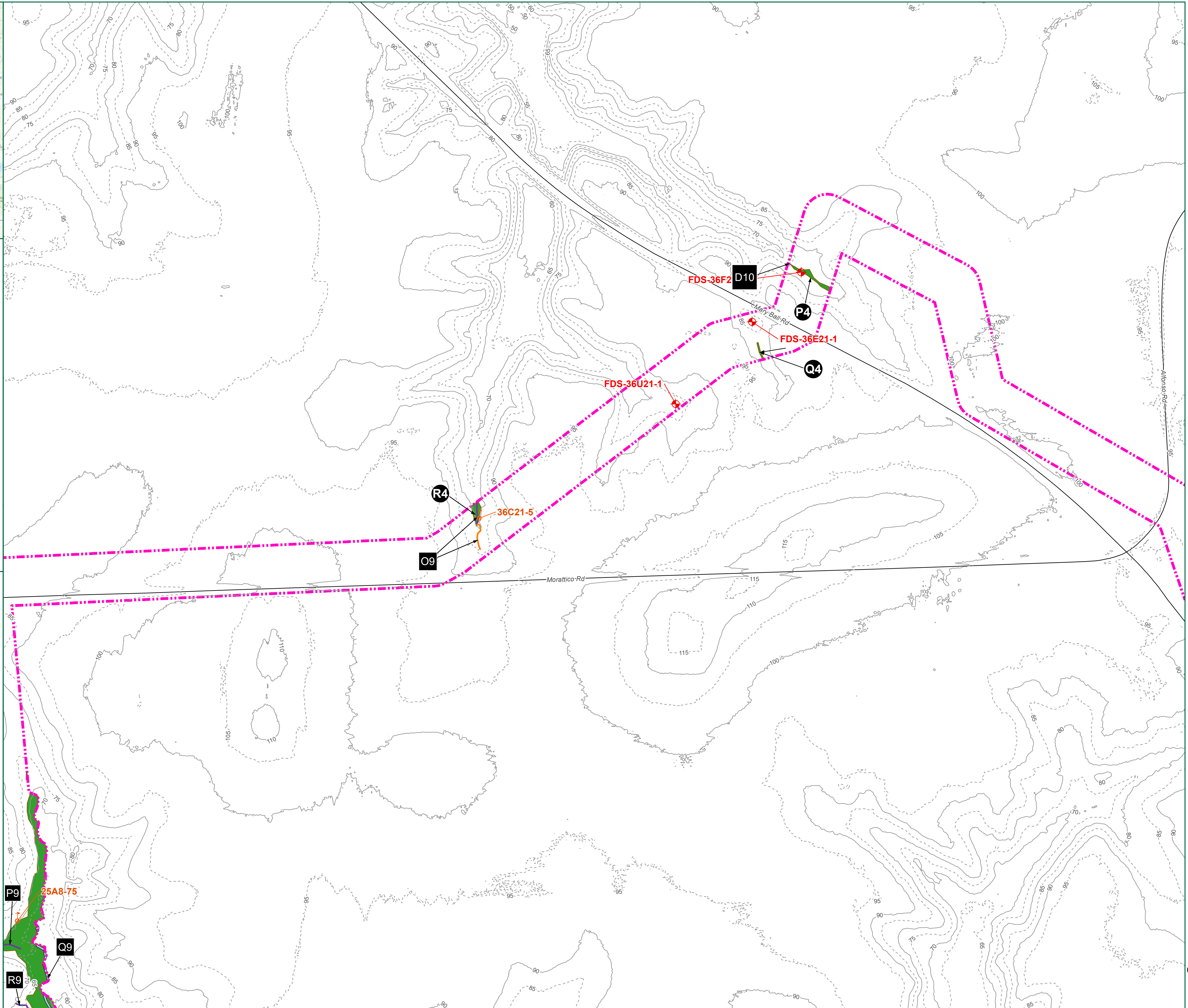
See Page 20 for Resource Identification Table

Legend

- Project Study Limits- 2,764.3 Acres
- X Stream Identifier
- X Wetland Identifier
- Wetland Flag
- + Field Data Station
- Perennial Stream (R3)
- Intermittent Stream (R4)
- Ephemeral Stream (R6)
- Culvert
- Palustrine Open Water (POW)
- Palustrine Emergent (PEM) Wetlands
- Palustrine Forested (PFO) Wetlands
- Palustrine Scrub-Shrub (PSS) Wetlands

Topographic Contours

- Major- 10 Foot
- Minor- 5 Foot



TIMMONS GROUP
 YOUR VISION ACHIEVED THROUGH OURS.
 1001 Boulders Parkway, Suite 300
 Richmond, VA 23225
 TEL 804.200.6500
 www.timmons.com

PROJECT NAME & LOCATION
WALLER SOLAR
 LANCASTER COUNTY,
 VIRGINIA

DATE: 07/16/2020
 PROJECT NUMBER: 38786.008
 PROJECT NAME: WALLER SOLAR
 DESIGNED BY / DRAWN BY: M.COOLEY

1. Waters of the U.S. within the project study limits have been located using submeter, Bluetooth GPS antennas by Timmons Group.
2. Waters of the U.S. have not been confirmed by the U.S. Army Corps of Engineers until stamped.
3. Project limits are approximate.
4. Topography based on USGS LIDAR.
5. Cowardin Stream Classifications are based solely on field observations for most depicted features. See Figure 5 for reaches which had formal assessment.

These plans and associated documents are the exclusive property of TIMMONS GROUP and may not be reproduced in whole or in part and shall not be used for any purpose whatsoever, inclusive, but not limited to construction, bidding, and/or construction staking without the express written consent of TIMMONS GROUP.

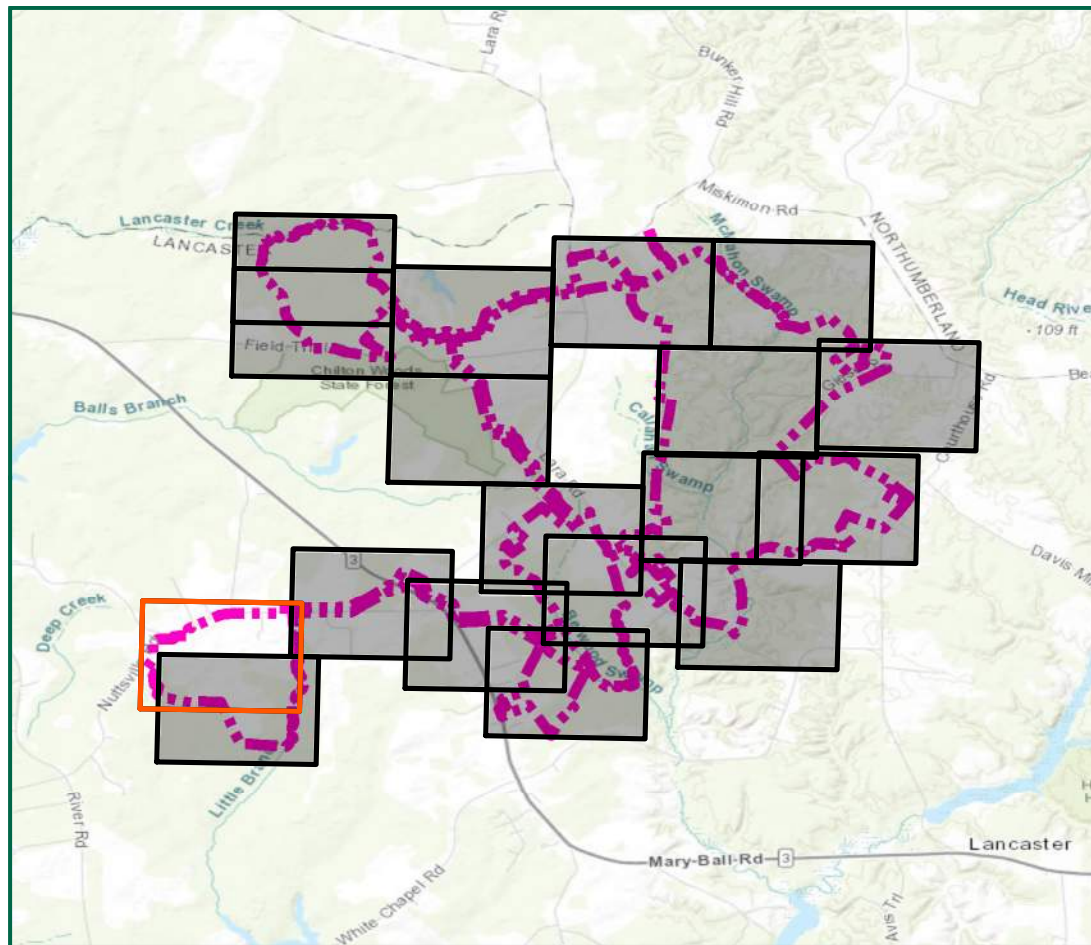
REVISIONS	
#	DESCRIPTION

DRAWING DESCRIPTION
FIGURE 4:
 WETLANDS AND
 WATERS OF THE
 U.S. DELINEATION
 MAP

SCALE (FEET)

0 200 400
 PLANS PRINTED AS 11x17 ARE HALF SCALE
 SCALE SHEET NUMBER

H:1" = 200' 17 of 20



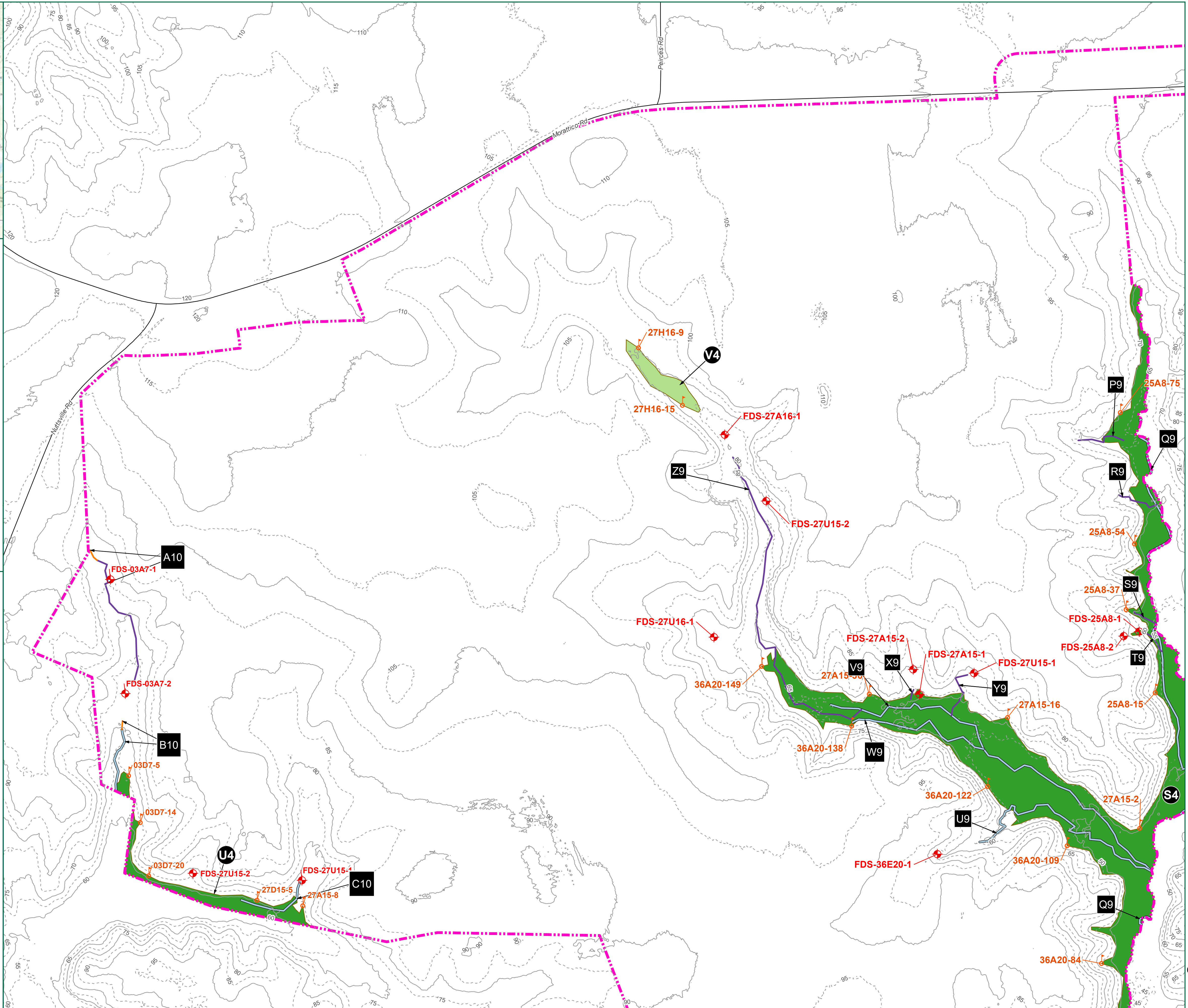
See Page 20 for Resource Identification Table

Legend

- Project Study Limits- 2,764.3 Acres
- X Stream Identifier
- X Wetland Identifier
- o Wetland Flag
- + Field Data Station
- Perennial Stream (R3)
- Intermittent Stream (R4)
- Ephemeral Stream (R6)
- Culvert
- Palustrine Open Water (POW)
- Palustrine Emergent (PEM) Wetlands
- Palustrine Forested (PFO) Wetlands
- Palustrine Scrub-Shrub (PSS) Wetlands

Topographic Contours

- Major- 10 Foot
- Minor- 5 Foot



TIMMONS GROUP
 YOUR VISION ACHIEVED THROUGH OURS.
 1001 Boulders Parkway, Suite 300
 Richmond, VA 23225
 TEL: 804.200.6500
 www.timmons.com

PROJECT NAME & LOCATION
 WALLER SOLAR
 LANCASTER COUNTY,
 VIRGINIA

DATE	07/16/2020
PROJECT NUMBER	38786.008
PROJECT NAME	WALLER SOLAR
DESIGNED BY / DRAWN BY	M.COOLEY

1. Waters of the U.S. within the project study limits have been located using submeter, Bluetooth GPS antennas by Timmons Group.
2. Waters of the U.S. have not been confirmed by the U.S. Army Corps of Engineers until stamped.
3. Project limits are approximate.
4. Topography based on USGS LIDAR.
5. Cowardin Stream Classifications are based solely on field observations for most depicted features. See Figure 5 for reaches which had formal assessment.

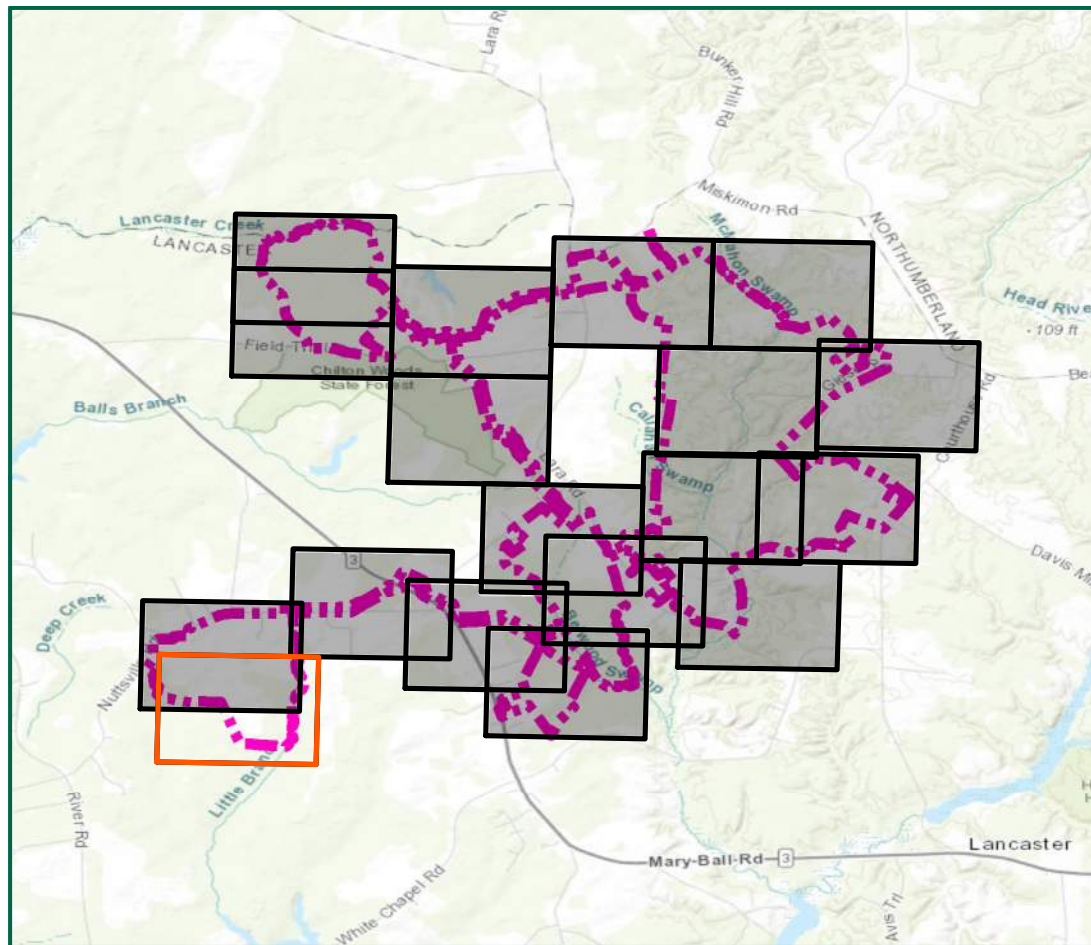
These plans and associated documents are the exclusive property of TIMMONS GROUP and shall not be reproduced in whole or in part and shall not be used for any purpose whatsoever, inclusive, but not limited to construction, bidding, and/or construction taking without the express written consent of TIMMONS GROUP.

REVISIONS	
#	DESCRIPTION

DRAWING DESCRIPTION
 FIGURE 4:
 WETLANDS AND
 WATERS OF THE
 U.S. DELINEATION
 MAP

SCALE (FEET)

0 200 400
 PLANS PRINTED AS 11X17 ARE HALF SCALE
 SCALE SHEET NUMBER
 H:1" = 200' 18 of 20



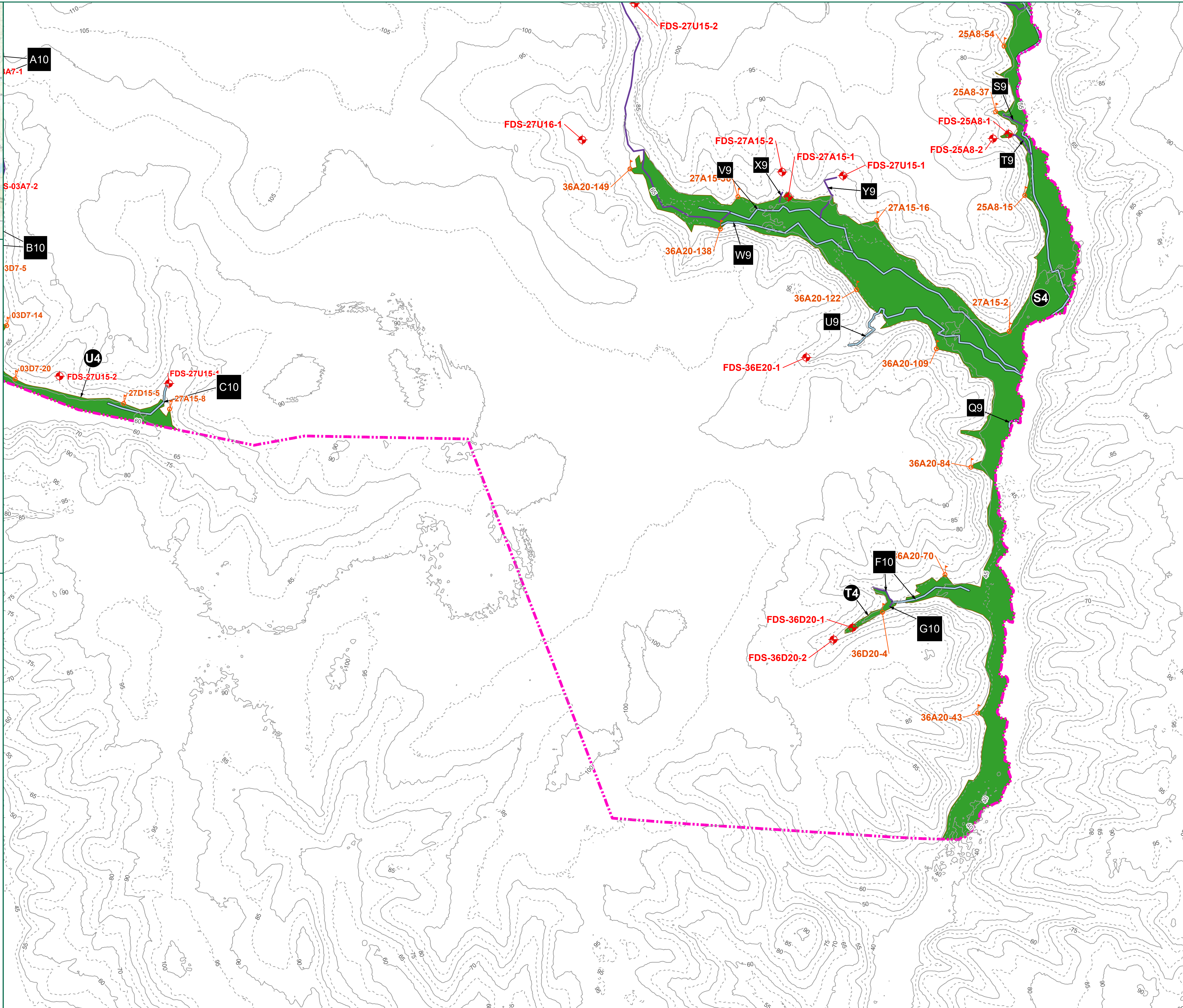
See Page 20 for Resource Identification Table

Legend

- Project Study Limits- 2,764.3 Acres
- Stream Identifier
- Wetland Identifier
- Wetland Flag
- Field Data Station
- Perennial Stream (R3)
- Intermittent Stream (R4)
- Ephemeral Stream (R6)
- Culvert
- Palustrine Open Water (POW)
- Palustrine Emergent (PEM) Wetlands
- Palustrine Forested (PFO) Wetlands
- Palustrine Scrub-Shrub (PSS) Wetlands

Topographic Contours

- Major- 10 Foot
- Minor- 5 Foot



TIMMONS GROUP
 YOUR VISION ACHIEVED THROUGH OURS.
 1001 Boulders Parkway, Suite 300
 Richmond, VA 23225
 TEL: 804.200.6500
 www.timmons.com

PROJECT NAME & LOCATION
WALLER SOLAR
 LANCASTER COUNTY,
 VIRGINIA

DATE: 07/16/2020
 PROJECT NUMBER: 38786.008
 PROJECT NAME: WALLER SOLAR
 DESIGNED BY / DRAWN BY: M. COOLEY

1. Waters of the U.S. within the project study limits have been located using submeter, Bluetooth GPS antennas by Timmons Group.
2. Waters of the U.S. have not been confirmed by the U.S. Army Corps of Engineers until stamped.
3. Project limits are approximate.
4. Topography based on USGS LIDAR.
5. Cowardin Stream Classifications are based solely on field observations for most depicted features. See Figure 5 for reaches which had formal assessment.

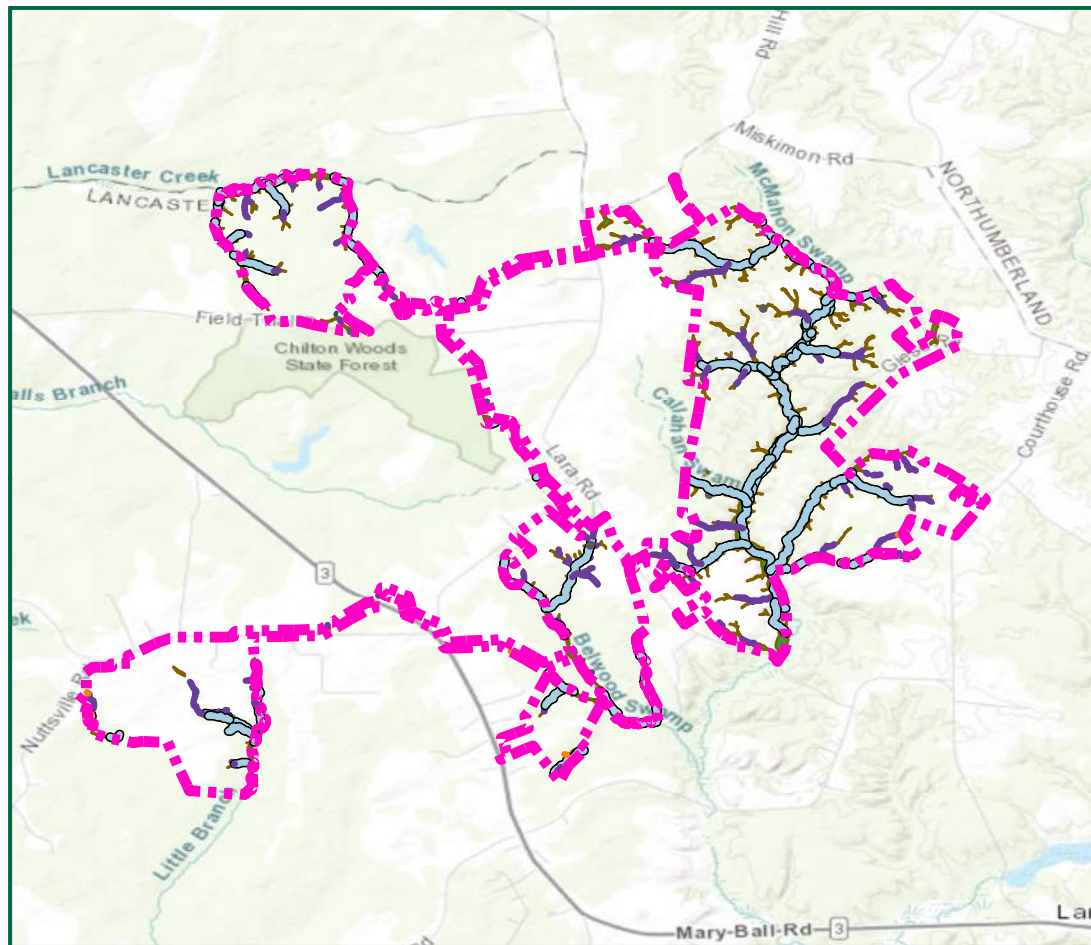
These plans and associated documents are the exclusive property of TIMMONS GROUP and may not be reproduced in whole or in part and shall not be used for any purpose whatsoever, inclusive, but not limited to construction, bidding, and/or construction taking without the express written consent of TIMMONS GROUP.

REVISIONS	
#	DESCRIPTION

DRAWING DESCRIPTION
FIGURE 4:
 WETLANDS AND
 WATERS OF THE
 U.S. DELINEATION
 MAP

SCALE (FEET)

0 200 400
 PLANS PRINTED AS 11x17 ARE HALF SCALE
 SCALE SHEET NUMBER
 H:1" = 200' 19 of 20



Resource Identification Table

Legend

- Project Study Limits- 2,764.3 Acres
- Perennial Stream (R3)
- Intermittent Stream (R4)
- Ephemeral Stream (R6)
- Culvert
- Palustrine Open Water (POW)
- Palustrine Emergent (PEM) Wetlands
- Palustrine Forested (PFO) Wetlands
- Palustrine Scrub-Shrub (PSS) Wetlands

Resource Identification	Confirmation								Resource Description Notes*
	PFO (sq ft)	PSS (sq ft)	PEM (sq ft)	POW (sq ft)	R3 (lf)	R4 (lf)	R6 (lf)	Ditch (lf)	
A	1,129,520	77,540	33,415						NT/V
B	3,437								NT/V
C	1,485								NT/V
D	407								NT/V
E	17,466								NT/V
F	14,886								NT/V
G	958								NT/V
H	723								NT/V
I	468								NT/V
J	60								NT/V
K	881								NT/V
L	1,045								NT/V
M	148								NT/V
N				3,372					NT/NV
O	14,882								NT/V
P	13,538								NT/V
Q	6,030								NT/V
R	11,299		3,321						NT/V
S	14,913								NT/V
T	19,942								NT/V
U	583								NT/V
V	6,520								NT/V
W	3,650								NT/V
X	11,732								NT/V
Y	79,398								NT/V
Z	20,988								NT/V
A2	6,373								NT/V
B2	68,663								NT/V
C2	302,242								NT/V
D2	498,293								NT/V
E2	6,017,720		133,288						NT/V
F2	18,661								NT/V
G2	3,580								NT/V
H2	2,908								NT/V
I2	4,661								NT/V
J2	1,865								NT/V
K2	21,145								NT/V
L2	3,813								NT/V
M2	13,888								NT/V
N2	12,949								NT/V
O2	4,052								NT/V
P2	72,523								NT/V
Q2	37								NT/V
R2	39,392								NT/V
S2	393								NT/V
T2	5,289								NT/V
U2	577								NT/V
V2	8,287								NT/V
W2	2,924								NT/V
X2	17,534								NT/V
Y2	9,873								NT/V
Z2	33,750								NT/V
A3	108								NT/V
B3	7,562								NT/V
C3	69,284								NT/V
D3	5,127								NT/V
E3	837								NT/V
F3	4,125								NT/V
G3	135								NT/V
H3	2,098								NT/V
I3	219								NT/V
J3	52								NT/V
K3	279,965								NT/V
L3	1,844								NT/V
M3	1,315								NT/V
N3	4,389								NT/V
O3	1,078								NT/V
P3	1,805								NT/V
Q3	1,966								NT/V
R3	1,763								NT/V
S3	34,410								NT/V
T3	1,324								NT/V
U3	15,868								NT/V
V3	2,613								NT/V
W3	401								NT/V
X3	3,395								NT/V
Y3	31,404								NT/V
Z3	1,987								NT/V
A4	8,873								NT/V
B4	1,107,799	2,768	84,103						NT/V

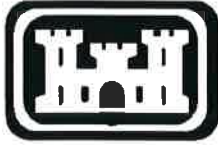
Resource Identification	Confirmation								Resource Description Notes*
	PFO (sq ft)	PSS (sq ft)	PEM (sq ft)	POW (sq ft)	R3 (lf)	R4 (lf)	R6 (lf)	Ditch (lf)	
C4	2,409								NT/V
D4	1,927								NT/V
E4	1,134								NT/V
F4	4,845								NT/V
G4	471								NT/V
H4	276								NT/V
I4	5,634								NT/V
J4	1,899								NT/V
K4	4,464								NT/V
L4	385								NT/V
M4	3,625								NT/V
N4	22,607								NT/V
O4	7,275								NT/V
P4	2,391								NT/V
Q4	444								NT/V
R4	2,292								NT/V
S4	699,777								NT/V
T4	6,459								NT/V
U4	46,589								NT/V
V4		23,685							NT/V
W4				2,104					NT/NV
X4				501					NT/NV
Y4				690					NT/NV
Z4					532				NT/NV
A5					634				NT/NV
B5					1,131	228			NT/NV
C5						146			NT/NV
D5						120			NT/NV
E5						868			NT/NV
F5					2,181	33			NT/NV
G5						67			NT/NV
H5					547	239			NT/NV
I5						258			NT/NV
J5					995	132			NT/NV
K5					697				NT/NV
L5						86			NT/NV
M5						138			NT/NV
N5					65	160			NT/NV
O5						207			NT/NV
P5						240			NT/NV
Q5						730			NT/NV
R5						119			NT/NV
S5					4,484				NT/NV
T5					19,391	191			NT/NV
U5						1,726			NT/NV
V5									NT/NV
W5					269				NT/NV
X5					286				NT/NV
Y5					80				NT/NV
Z5					102				NT/NV
A6					114				NT/NV
B6					2,768	352			NT/NV
C6						401			NT/NV
D6						69			NT/NV
E6					125	41			NT/NV
F6					212				NT/NV
G6					2,408				NT/NV
H6					66				NT/NV
I6					2,347	836			NT/NV
J6						1,365			NT/NV
K6						278			NT/NV
L6						149			NT/NV
M6						170			NT/NV
N6						252			NT/NV
O6					92	453			NT/NV
P6					4,905				NT/NV
Q6					1,890	639			NT/NV
R6						58			NT/NV
S6						197			NT/NV
T6						229			NT/NV
U6						571			NT/NV
V6						29			NT/NV
W6						92			NT/NV
X6						66			NT/NV
Y6						322			NT/NV
Z6						221			NT/NV
A7							80		NT/NV
B7						20			NT/NV
C7						53			NT/NV
D7						221	23		NT/NV
E7						3,386	109		NT/NV

Resource Identification	Confirmation								Resource Description Notes*
	PFO (sq ft)	PSS (sq ft)	PEM (sq ft)	POW (sq ft)	R3 (lf)	R4 (lf)	R6 (lf)	Ditch (lf)	
F7									NT/NV
G7									NT/NV
H7									NT/NV
I7									NT/NV
J7								98	NT/NV
K7				1,303		1,202			NT/NV
L7						64			NT/NV
M7						410			NT/NV
N7						142			NT/NV
O7						87			NT/NV
P7						36			NT/NV
Q7						326			NT/NV
R7						281			NT/NV
S7						242			NT/NV
T7							146		NT/NV
U7							163		NT/NV
V7									NT/NV
W7					1,152	330			NT/NV
X7						566			NT/NV
Y7						109			NT/NV
Z7						93			NT/NV
A8						832			NT/NV
B8						229			NT/NV
C8					1,078	833			NT/NV
D8						101			NT/NV
E8						108			NT/NV
F8						220			NT/NV
G8						63			NT/NV
H8					1,106	1,642			NT/NV
I8					404				NT/NV
J8						56			NT/NV
K8						1,280			NT/NV
L8						15			NT/NV
M8						22			NT/NV
N8						419			NT/NV
O8						225			NT/NV
P8						3,034			NT/NV
Q8						154			NT/NV
R8						126			NT/NV
S8						275			NT/NV
T8									

APPENDIX A
FIELD DATA SHEETS

Field Data Sheets were provided in a separate attachment due to file size limitations

APPENDIX B
USACE JD REQUEST FORM



NORFOLK DISTRICT REGULATORY OFFICE PRE-APPLICATION AND/OR JURISDICTIONAL WATERS DETERMINATION REQUEST FORM

This form is used when you want to determine if areas on your property fall under regulatory requirements of the U.S. Army Corps of Engineers (USACE). Please supply the following information and supporting documents described below. This form can be filled out online and/or printed and then mailed, faxed, or e-mailed to the Norfolk District. Submitting this request authorizes the US Army Corps of Engineers to field inspect the property site, if necessary, to help in the determination process. **THIS FORM MUST BE SIGNED BY THE PROPERTY OWNER TO BE CONSIDERED A FORMAL REQUEST.**

The printed form and supporting documents should be mailed to:

U.S. Army Corps of Engineers, Norfolk District
Regulatory Branch
803 Front Street
Norfolk, Virginia 23510-1096

Or faxed to (757) 201-7678

Or sent via e-mail to: CENAO.REG_ROD@usace.army.mil

Additional information on the Regulatory Program is available on our website at:

<http://www.nao.usace.army.mil/>

Please contact us at 757-201-7652 if you need any assistance with filling out this form.

Location and Information about Property to be subject to a Jurisdictional Determination:

1. Date of Request: 02/12/2020
2. Project Name: Waller Solar
3. City or County where property located: Lancaster County
4. Address of property and directions (attach a map of the property location and a copy of the property plat): Several access locations to site. Please see attached mapping included with JD package
5. Coordinates of property (if known): 37.803519, -76.506772
6. Size of property in acres: 2393
7. Tax Parcel Number / GPIN (if available): 7-3, 8-2, 8-2A, 3-2B, 8-14, 7-16, 8-12, 8-13, 8-34, 8-17, 8-35A, 7-36, 7-36A, 14-52, 14-52B, 13-164, 6-47, 3-2, 7-4, 7-11A, 7-12, 7-13, 7-86, 7-5, 7-10, 7-11, 7-90, 7-85C, 7-30, 7-46, 7-45, 7-23E, 7-23, 7-79, 7-37A, 7-64, 7-64E, 7-65C, 7-68, 7-66B, 7-43, 7-44
8. Name of Nearest Waterway: Belwood Swamp, McMacon Swamp, Callahan Swamp, Lancaster Swamp, Balls Branch, Little Branch

9. Brief Description of Proposed Activity, Reason for Preapplication Request, and/or Reason for Jurisdictional Waters Determination Request:
Environmental due diligence.

10. Has a wetland delineation/determination been completed by a consultant or the Corps on the property previously? YES NO UNKNOWN

If yes, please provide the name of the consultant and/or Corps staff and Corps permit number, if available:

Property Owner Contact Information:

Property Owner Name: David Savage
Mailing Address: Waller Solar I, LLC
City: State: Zip: 1105 Navasota Street
Daytime Telephone: Austin, TX 78702
E-mail Address:

If the person requesting the Jurisdictional Determination is **NOT** the Property Owner, please also supply the Requestor's contact information here:


Requestor Name: Timmons Group
Mailing Address: 1001 Boulders Parkway, Suite 300
City: State: Zip: Richmond, VA 23225
Daytime Telephone: 804-200-6567
E-mail Address: ben.sagara@timmons.com

Additionally, if you have any of the following information, please include it with your request: wetland delineation map, other relevant maps, drain tile survey, topographic survey, and/or site photographs.

CERTIFICATION: I am hereby requesting a preapplication consultation or jurisdictional waters and/or wetlands determination from the U.S. Army Corps of Engineers, for the property(ies) I have described herein. I agree to allow the duly authorized representatives of the Norfolk District Corps of Engineers and other regulatory or advisory agencies to enter upon the premises of the project site at reasonable times to evaluate inspect and photograph site conditions. This consent to enter the property is superior to, takes precedence over, and waives any communication to the contrary. For example, if the property is posted as "no trespassing" this consent specifically supercedes and waives that prohibition and grants permission to enter the property despite such posting. I hereby certify that the information contained in the Request for a Jurisdictional Determination is accurate and complete:



Property Owner's Signature



Date