

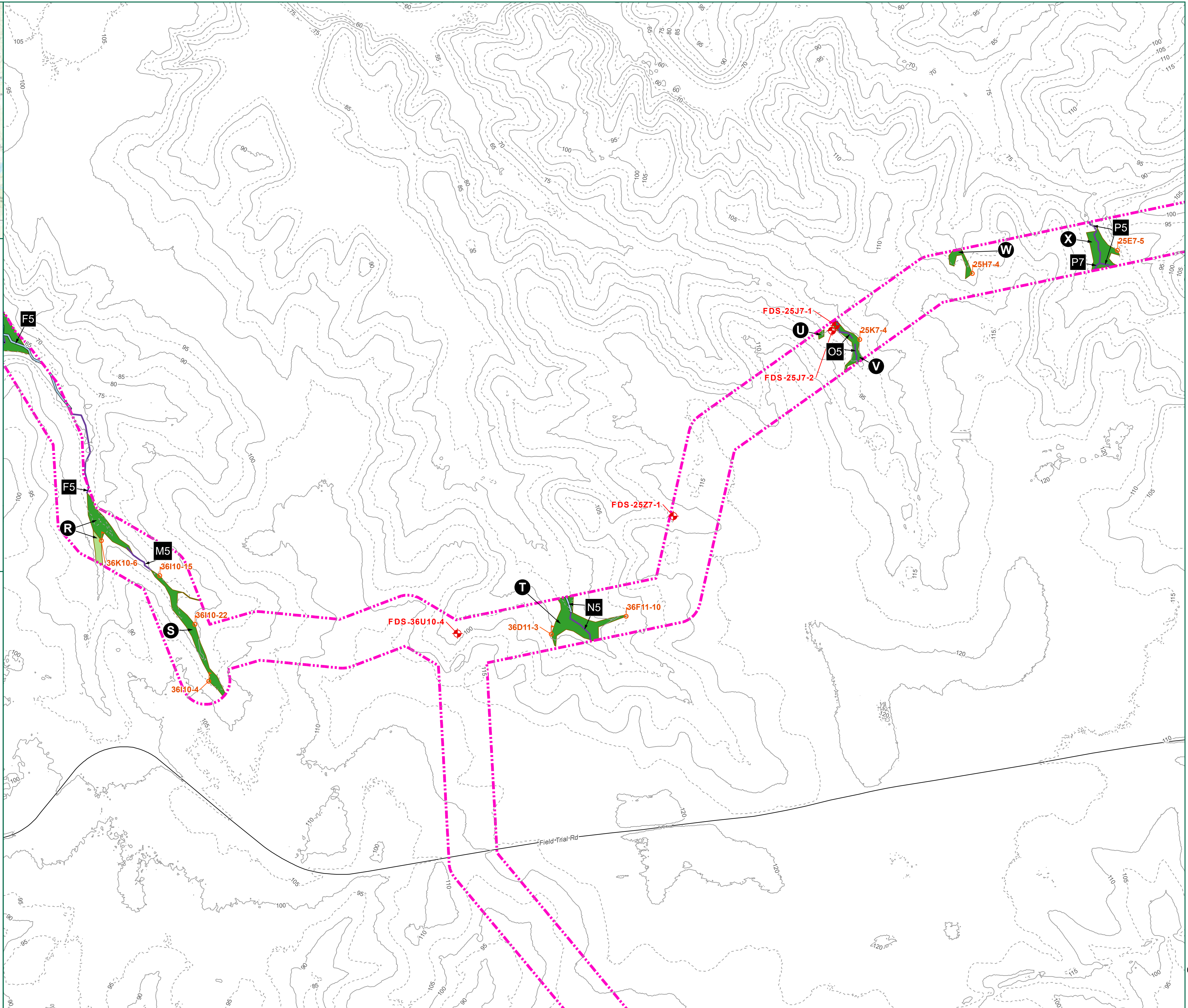
See Page 20 for Resource Identification Table

Legend

- Project Study Limits- 2,764.3 Acres
- Stream Identifier
- Wetland Identifier
- Wetland Flag
- Field Data Station
- Perennial Stream (R3)
- Intermittent Stream (R4)
- Ephemeral Stream (R6)
- Culvert
- Palustrine Open Water (POW)
- Palustrine Emergent (PEM) Wetlands
- Palustrine Forested (PFO) Wetlands
- Palustrine Scrub-Shrub (PSS) Wetlands

Topographic Contours

- Major- 10 Foot
- Minor- 5 Foot



TIMMONS GROUP
 YOUR VISION ACHIEVED THROUGH OURS.
 1001 Boulders Parkway, Suite 300
 Richmond, VA 23225
 TEL 804.200.6500
 www.timmons.com

PROJECT NAME & LOCATION
WALLER SOLAR
 LANCASTER COUNTY,
 VIRGINIA

| | |
|------------------------|--------------|
| DATE | 07/16/2020 |
| PROJECT NUMBER | 38786.008 |
| PROJECT NAME | WALLER SOLAR |
| DESIGNED BY / DRAWN BY | M.COOLEY |

1. Waters of the U.S. within the project study limits have been located using submeter, Bluetooth GPS antennas by Timmons Group.
2. Waters of the U.S. have not been confirmed by the U.S. Army Corps of Engineers until stamped.
3. Project limits are approximate.
4. Topography based on USGS LIDAR.
5. Cowardin Stream Classifications are based solely on field observations for most depicted features. See Figure 5 for reaches which had formal assessment.

These plans and associated documents are the exclusive property of TIMMONS GROUP and shall not be reproduced in whole or in part and shall not be used for any purpose whatsoever, inclusive, but not limited to construction, bidding, and/or construction staking without the express written consent of TIMMONS GROUP.

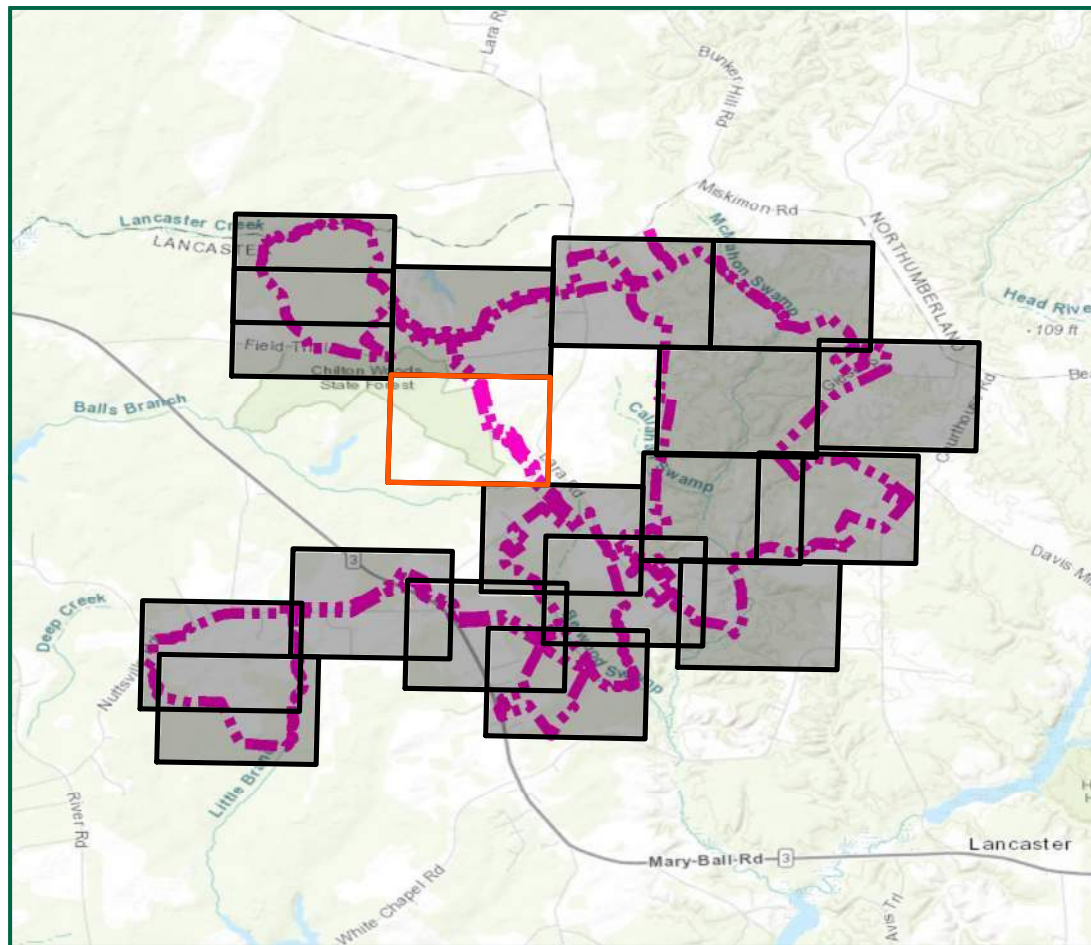
| REVISIONS | |
|-----------|-------------|
| # | DESCRIPTION |
| | |
| | |
| | |
| | |

DRAWING DESCRIPTION
FIGURE 4:
 WETLANDS AND
 WATERS OF THE
 U.S. DELINEATION
 MAP

SCALE (FEET)

0 200 400
 PLANS PRINTED AS 11X17 ARE HALF SCALE
 SCALE SHEET NUMBER

H:1" = 200' 4 of 20



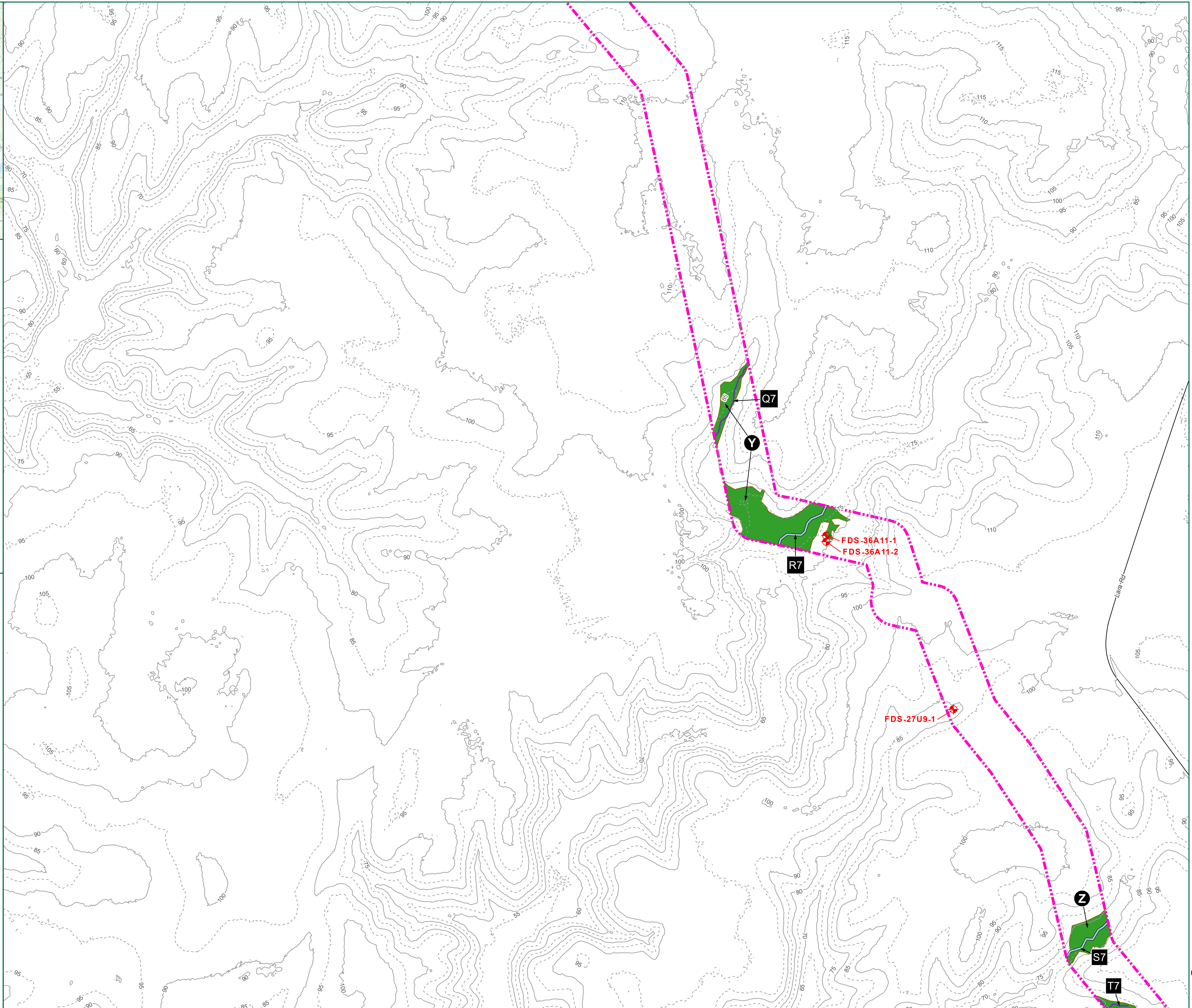
See Page 20 for Resource Identification Table

Legend

- Project Study Limits- 2,764.3 Acres
- Stream Identifier
- Wetland Identifier
- Wetland Flag
- Field Data Station
- Perennial Stream (R3)
- Intermittent Stream (R4)
- Ephemeral Stream (R6)
- Culvert
- Palustrine Open Water (POW)
- Palustrine Emergent (PEM) Wetlands
- Palustrine Forested (PFO) Wetlands
- Palustrine Scrub-Shrub (PSS) Wetlands

Topographic Contours

- Major- 10 Foot
- Minor- 5 Foot



TIMMONS GROUP
 YOUR VISION ACHIEVED THROUGH OURS.
 1001 Boulders Parkway, Suite 300
 Richmond, VA 23225
 TEL: 804.200.6500
 www.timmons.com

PROJECT NAME & LOCATION
WALLER SOLAR
 LANCASTER COUNTY,
 VIRGINIA

DATE: 07/16/2020
 PROJECT NUMBER: 38786.008
 PROJECT NAME: WALLER SOLAR
 DESIGNED BY / DRAWN BY: M.COOLEY

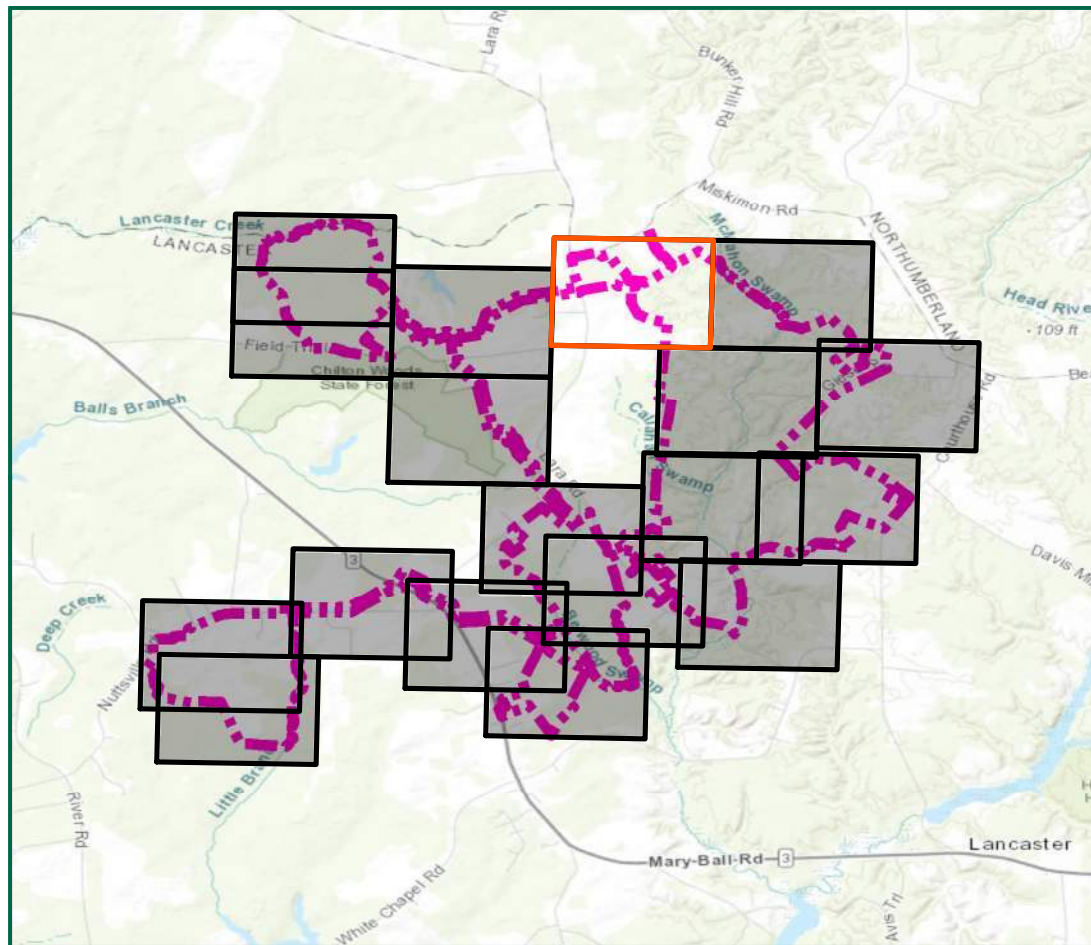
1. Waters of the U.S. within the project study limits have been located using submeter, Bluetooth GPS antennas by Timmons Group.
2. Waters of the U.S. have not been confirmed by the U.S. Army Corps of Engineers until stamped.
3. Project limits are approximate.
4. Topography based on USGS LIDAR.
5. Cowardin Stream Classifications are based solely on field observations for most depicted features. See Figure 5 for reaches which had formal assessment.

These plans and associated documents are the exclusive property of TIMMONS GROUP and may not be reproduced in whole or in part and shall not be used for any purpose whatsoever, inclusive, but not limited to construction, bidding, and/or construction staking without the express written consent of TIMMONS GROUP.

| REVISIONS | |
|-----------|-------------|
| # | DESCRIPTION |
| | |
| | |
| | |
| | |
| | |
| | |
| | |
| | |
| | |
| | |

DRAWING DESCRIPTION
FIGURE 4:
 WETLANDS AND
 WATERS OF THE
 U.S. DELINEATION
 MAP

SCALE (FEET)
 0 200 400
PLANS PRINTED AS 11X17 ARE HALF SCALE
SCALE FEET NUMBER
 H:1" = 200' 5 of 20



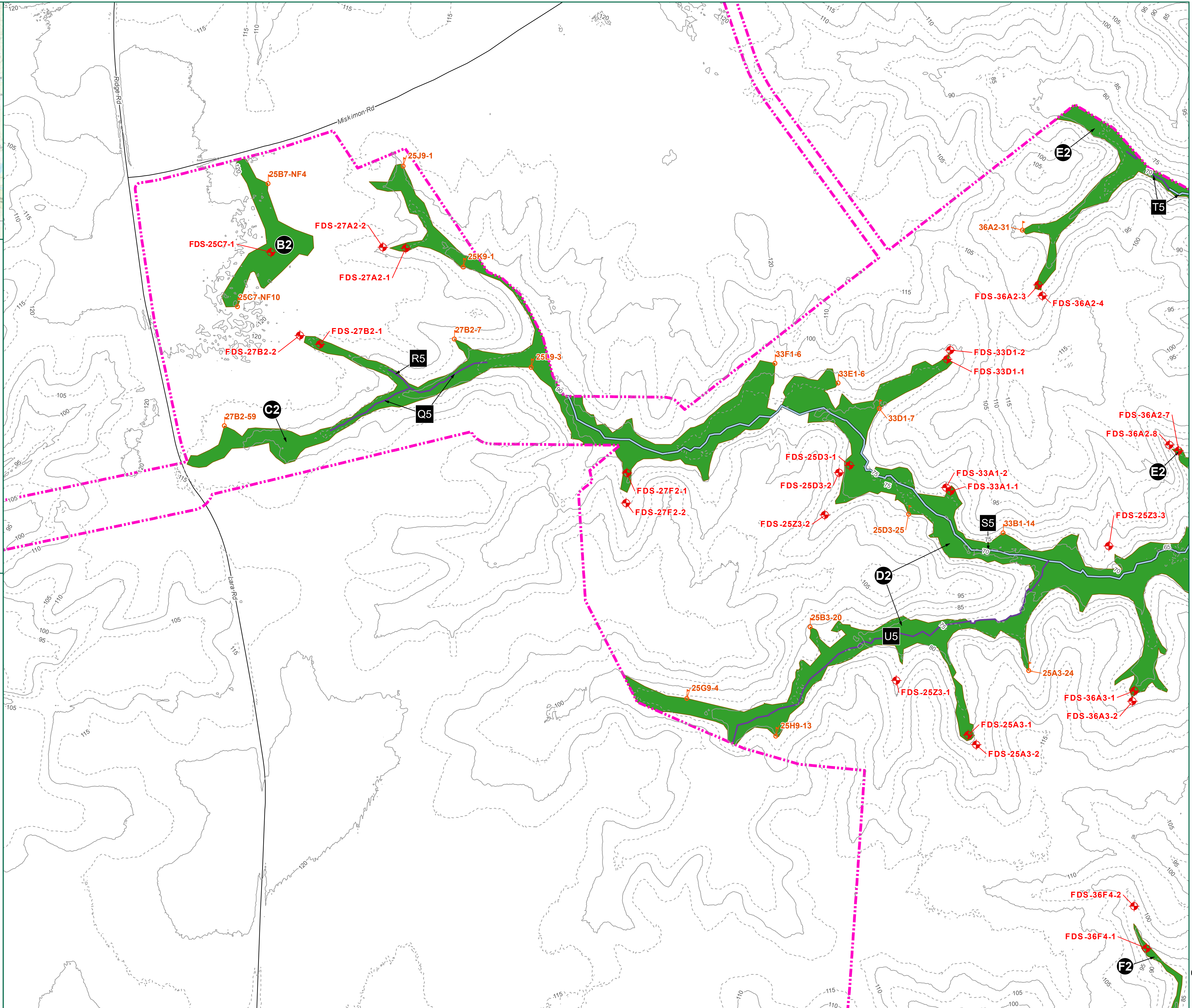
See Page 20 for Resource Identification Table

Legend

- Project Study Limits- 2,764.3 Acres
- X Stream Identifier
- X Wetland Identifier
- Wetland Flag
- + Field Data Station
- Perennial Stream (R3)
- Intermittent Stream (R4)
- Ephemeral Stream (R6)
- Culvert
- Palustrine Open Water (POW)
- Palustrine Emergent (PEM) Wetlands
- Palustrine Forested (PFO) Wetlands
- Palustrine Scrub-Shrub (PSS) Wetlands

Topographic Contours

- Major- 10 Foot
- Minor- 5 Foot



TIMMONS GROUP
 YOUR VISION ACHIEVED THROUGH OURS.
 1001 Boulders Parkway, Suite 300
 Richmond, VA 23225
 TEL 804.200.6500
 www.timmons.com

PROJECT NAME & LOCATION
WALLER SOLAR
 LANCASTER COUNTY,
 VIRGINIA

| | |
|------------------------|--------------|
| DATE | 07/16/2020 |
| PROJECT NUMBER | 38786.008 |
| PROJECT NAME | WALLER SOLAR |
| DESIGNED BY / DRAWN BY | M.COOLEY |

1. Waters of the U.S. within the project study limits have been located using submeter, Bluetooth GPS antennas by Timmons Group.
2. Waters of the U.S. have not been confirmed by the U.S. Army Corps of Engineers until stamped.
3. Project limits are approximate.
4. Topography based on USGS LIDAR.
5. Cowardin Stream Classifications are based solely on field observations for most depicted features. See Figure 5 for reaches which had formal assessment.

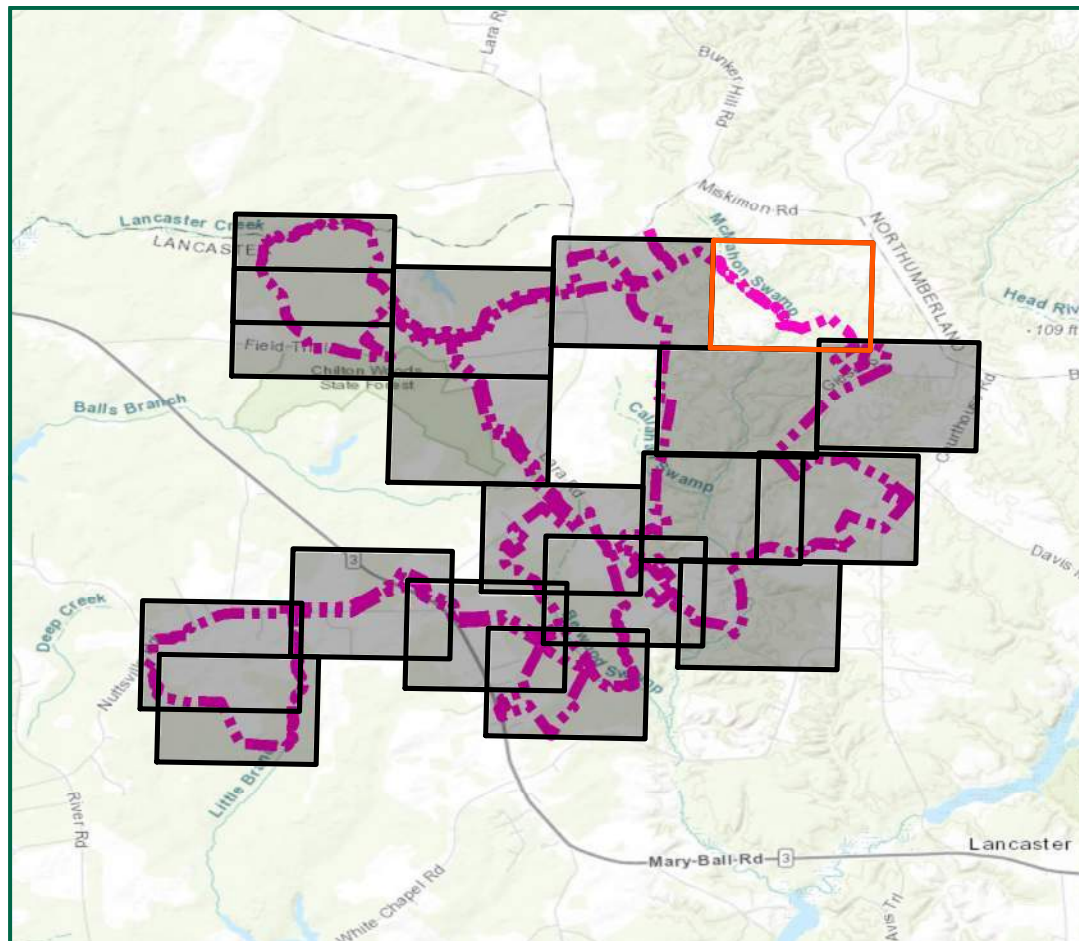
These plans and associated documents are the exclusive property of TIMMONS GROUP and shall not be used for any purpose whatsoever, inclusive, but not limited to construction, bidding, and/or construction staking without the express written consent of TIMMONS GROUP.

| REVISIONS | |
|-----------|-------------|
| # | DESCRIPTION |
| | |
| | |
| | |
| | |
| | |

DRAWING DESCRIPTION
FIGURE 4:
 WETLANDS AND
 WATERS OF THE
 U.S. DELINEATION
 MAP

SCALE (FEET)

0 200 400
 PLANS PRINTED AS 11X17 ARE HALF SCALE
 SCALE SHEET NUMBER
 H:1" = 200' 6 of 20



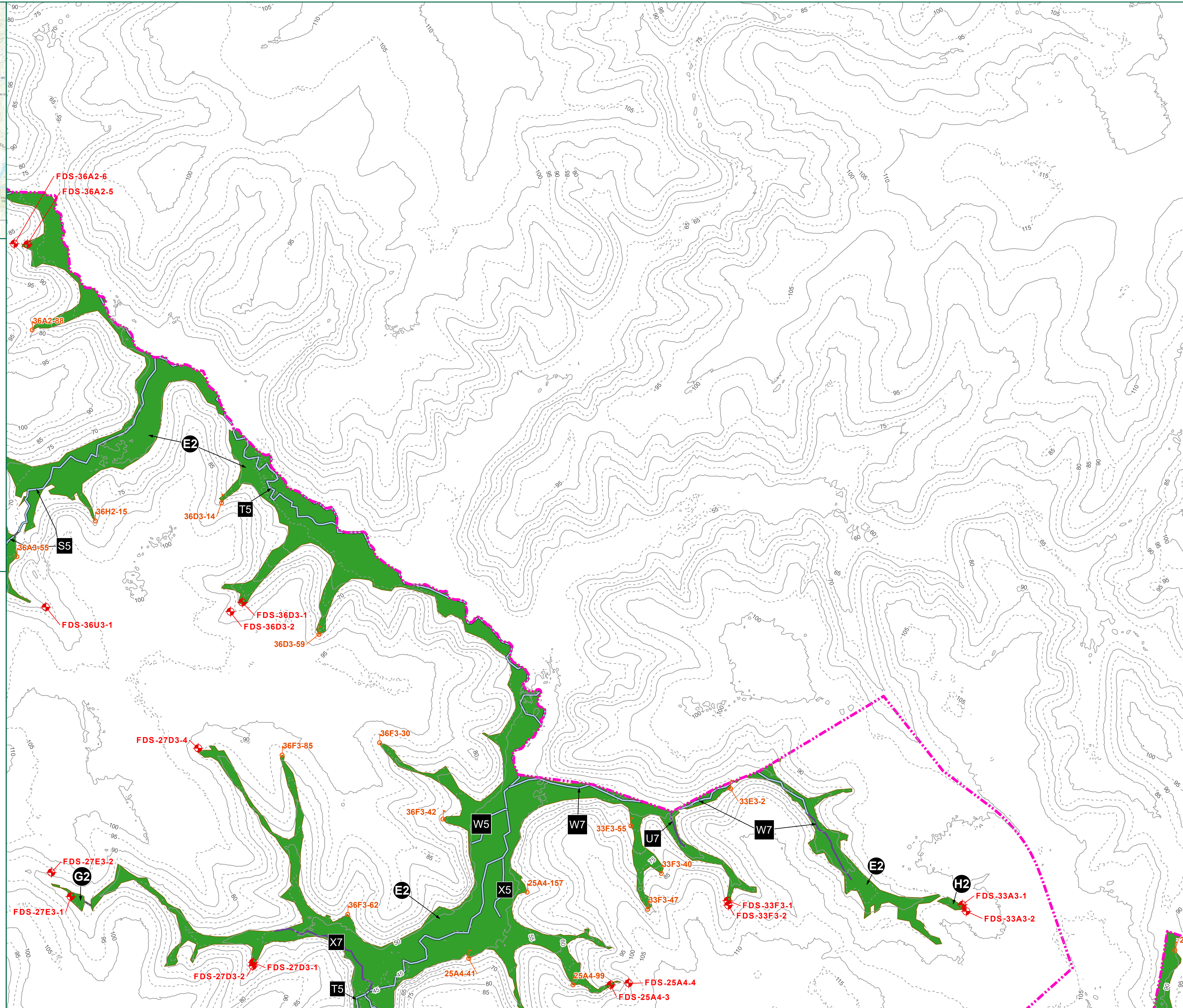
See Page 20 for Resource Identification Table

Legend

- Project Study Limits- 2,764.3 Acres
- X Stream Identifier
- X Wetland Identifier
- o Wetland Flag
- + Field Data Station
- Perennial Stream (R3)
- Intermittent Stream (R4)
- Ephemeral Stream (R6)
- Culvert
- Palustrine Open Water (POW)
- Palustrine Emergent (PEM) Wetlands
- Palustrine Forested (PFO) Wetlands
- Palustrine Scrub-Shrub (PSS) Wetlands

Topographic Contours

- Major- 10 Foot
- Minor- 5 Foot



TIMMONS GROUP
 YOUR VISION ACHIEVED THROUGH OURS.
 1001 Boulders Parkway, Suite 300
 Richmond, VA 23225
 TEL: 804.200.6500
 www.timmons.com

PROJECT NAME & LOCATION
WALLER SOLAR
 LANCASTER COUNTY,
 VIRGINIA

| | |
|------------------------|--------------|
| DATE | 07/16/2020 |
| PROJECT NUMBER | 38786.008 |
| PROJECT NAME | WALLER SOLAR |
| DESIGNED BY / DRAWN BY | M.COOLEY |

1. Waters of the U.S. within the project study limits have been located using submeter, Bluetooth GPS antennas by Timmons Group.
2. Waters of the U.S. have not been confirmed by the U.S. Army Corps of Engineers until stamped.
3. Project limits are approximate.
4. Topography based on USGS LIDAR.
5. Cowardin Stream Classifications are based solely on field observations for most depicted features. See Figure 5 for reaches which had formal assessment.

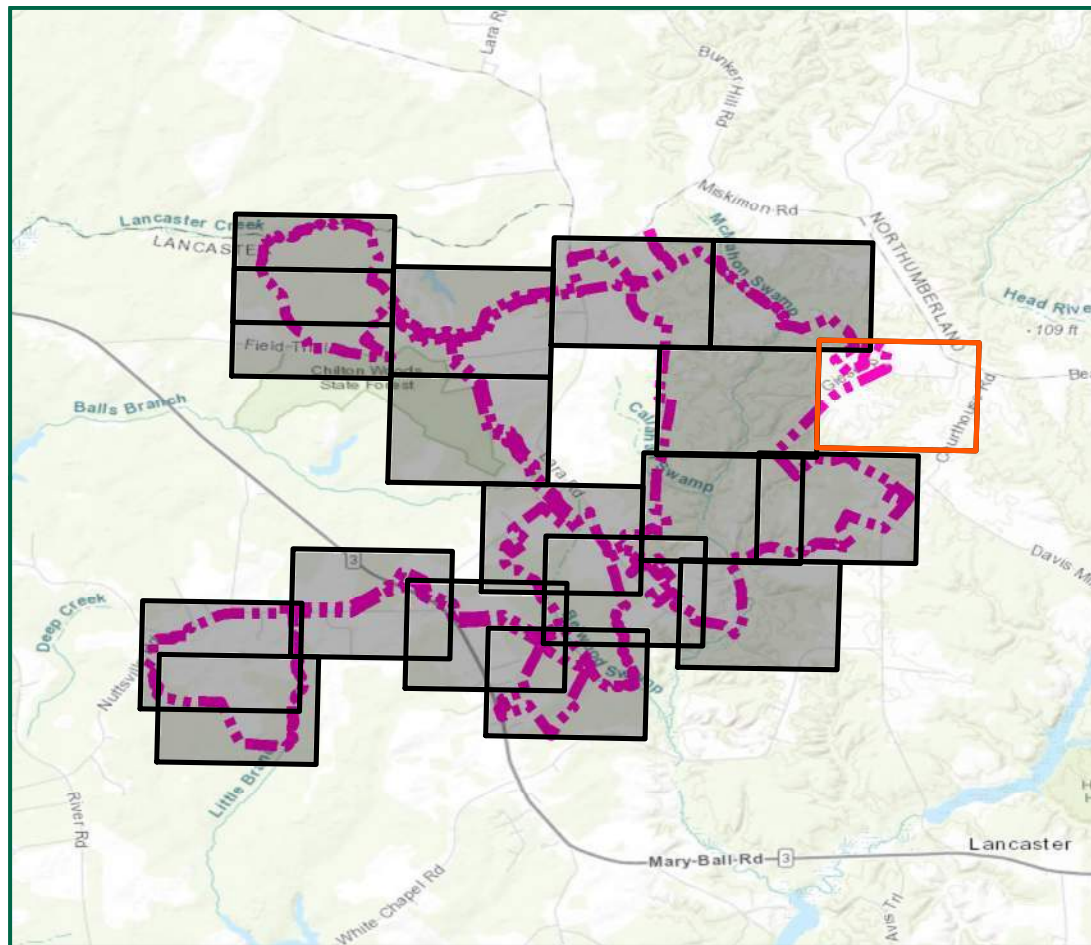
These plans and associated documents are the exclusive property of TIMMONS GROUP and may not be reproduced in whole or in part and shall not be used for any purpose whatsoever, inclusive, but not limited to construction, bidding, and/or construction taking without the express written consent of TIMMONS GROUP.

| REVISIONS | |
|-----------|-------------|
| # | DESCRIPTION |
| | |
| | |
| | |
| | |
| | |
| | |
| | |
| | |
| | |
| | |

DRAWING DESCRIPTION
FIGURE 4:
 WETLANDS AND
 WATERS OF THE
 U.S. DELINEATION
 MAP

SCALE (FEET)

0 200 400
 PLANS PRINTED AS 11x17 ARE HALF SCALE
 SCALE SHEET NUMBER
 H:1" = 200' 7 of 20



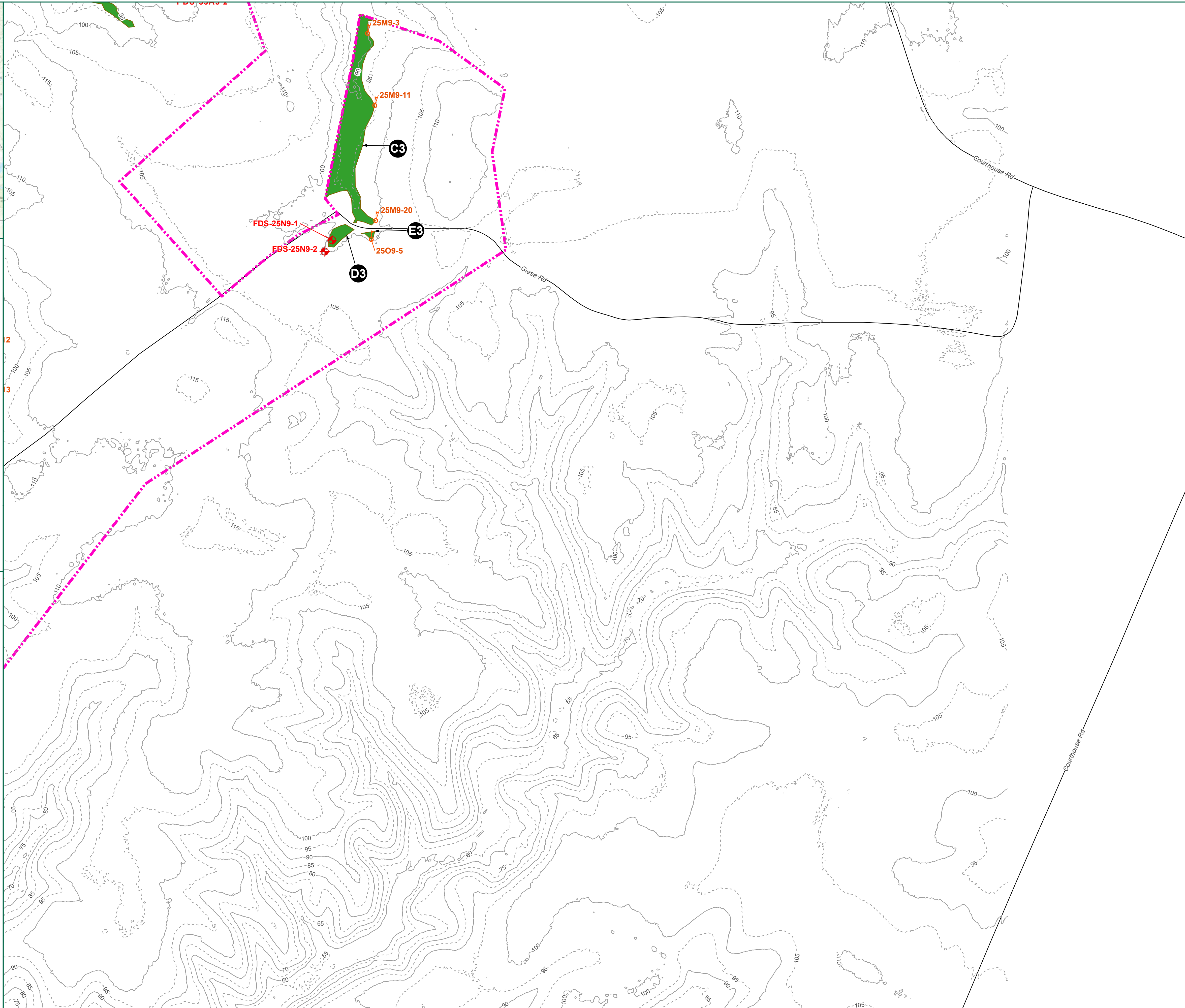
See Page 20 for Resource Identification Table

Legend

- Project Study Limits- 2,764.3 Acres
- Stream Identifier
- Wetland Identifier
- Wetland Flag
- Field Data Station
- Perennial Stream (R3)
- Intermittent Stream (R4)
- Ephemeral Stream (R6)
- Culvert
- Palustrine Open Water (POW)
- Palustrine Emergent (PEM) Wetlands
- Palustrine Forested (PFO) Wetlands
- Palustrine Scrub-Shrub (PSS) Wetlands

Topographic Contours

- Major- 10 Foot
- Minor- 5 Foot



TIMMONS GROUP
 YOUR VISION ACHIEVED THROUGH OURS.
 1001 Boulders Parkway, Suite 300
 Richmond, VA 23225
 TEL: 804.200.6500
 www.timmons.com

PROJECT NAME & LOCATION
WALLER SOLAR
 LANCASTER COUNTY,
 VIRGINIA

| | |
|------------------------|--------------|
| DATE | 07/16/2020 |
| PROJECT NUMBER | 38786.008 |
| PROJECT NAME | WALLER SOLAR |
| DESIGNED BY / DRAWN BY | M.COOLEY |

1. Waters of the U.S. within the project study limits have been located using submeter, Bluetooth GPS antennas by Timmons Group.
2. Waters of the U.S. have not been confirmed by the U.S. Army Corps of Engineers until stamped.
3. Project limits are approximate.
4. Topography based on USGS LIDAR.
5. Cowardin Stream Classifications are based solely on field observations for most depicted features. See Figure 5 for reaches which had formal assessment.

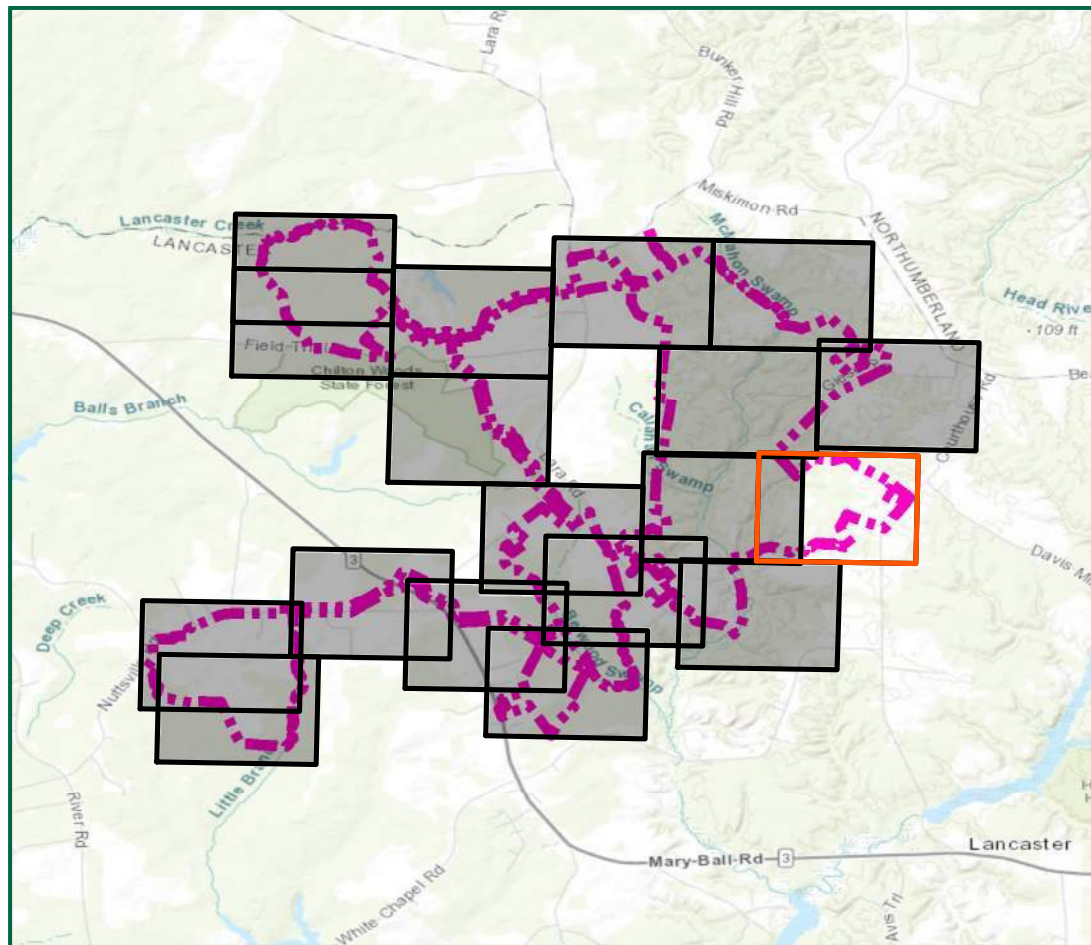
These plans and associated documents are the exclusive property of TIMMONS GROUP and may not be reproduced in whole or in part and shall not be used for any purpose whatsoever, inclusive, but not limited to construction, bidding, and/or construction staking without the express written consent of TIMMONS GROUP.

| REVISIONS | |
|-----------|-------------|
| # | DESCRIPTION |
| | |
| | |
| | |
| | |
| | |
| | |
| | |
| | |
| | |
| | |

DRAWING DESCRIPTION
FIGURE 4:
 WETLANDS AND
 WATERS OF THE
 U.S. DELINEATION
 MAP

SCALE (FEET)

0 200 400
 PLANS PRINTED AS 11X17 ARE HALF SCALE
 SCALE SHEET NUMBER
 H:1" = 200' 9 of 20



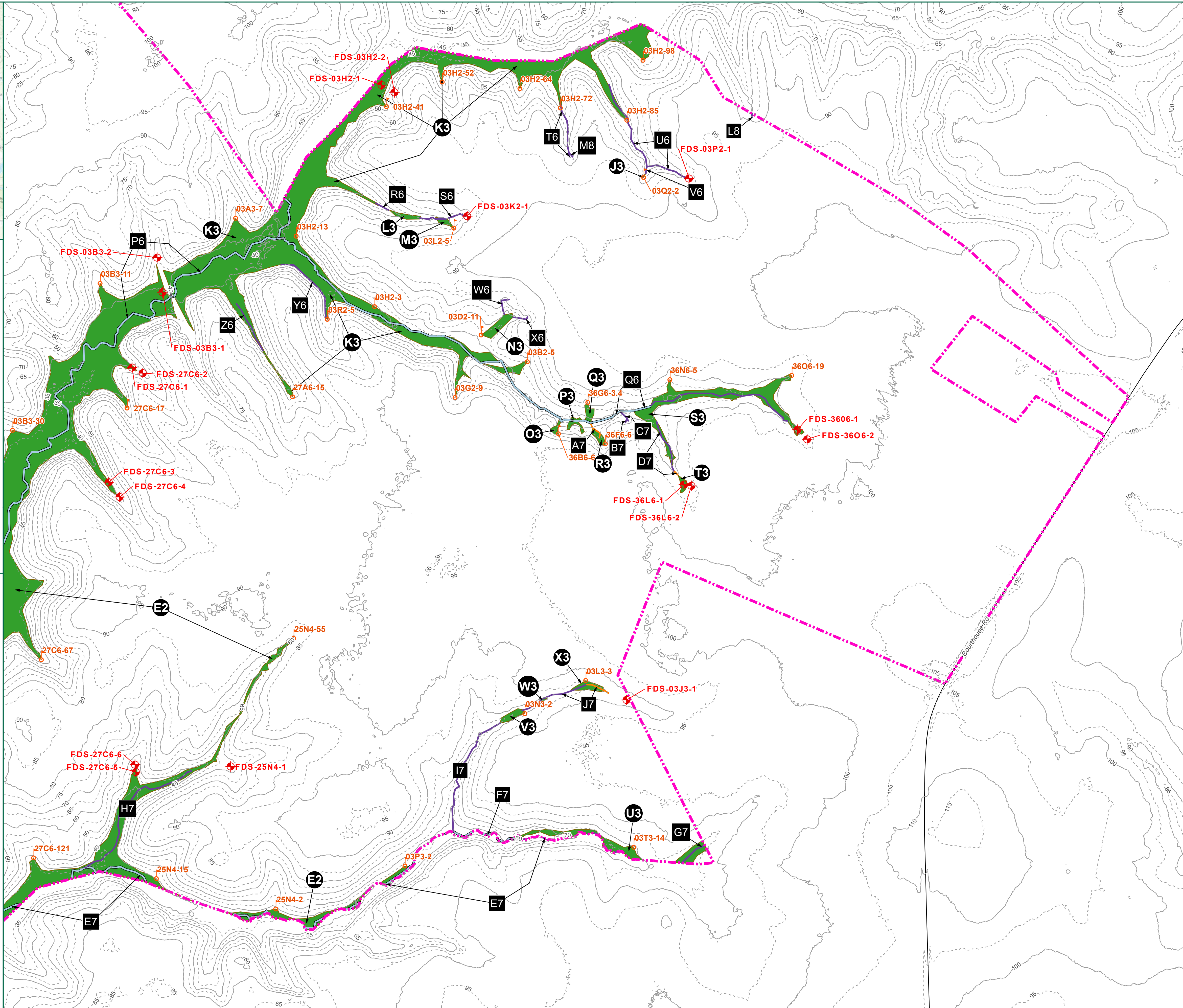
See Page 20 for Resource Identification Table

Legend

- Project Study Limits- 2,764.3 Acres
- Stream Identifier
- Wetland Identifier
- Wetland Flag
- Field Data Station
- Perennial Stream (R3)
- Intermittent Stream (R4)
- Ephemeral Stream (R6)
- Culvert
- Palustrine Open Water (POW)
- Palustrine Emergent (PEM) Wetlands
- Palustrine Forested (PFO) Wetlands
- Palustrine Scrub-Shrub (PSS) Wetlands

Topographic Contours

- Major- 10 Foot
- Minor- 5 Foot



TIMMONS GROUP
 YOUR VISION ACHIEVED THROUGH OURS.
 1001 Boulders Parkway, Suite 300
 Richmond, VA 23225
 TEL 804.200.6500
 www.timmons.com

PROJECT NAME & LOCATION
WALLER SOLAR
 LANCASTER COUNTY,
 VIRGINIA

DATE: 07/16/2020
 PROJECT NUMBER: 38786.008
 PROJECT NAME: WALLER SOLAR
 DESIGNED BY / DRAWN BY: M. COOLEY

1. Waters of the U.S. within the project study limits have been located using submeter, Bluetooth GPS antennas by Timmons Group.
2. Waters of the U.S. have not been confirmed by the U.S. Army Corps of Engineers until stamped.
3. Project limits are approximate.
4. Topography based on USGS LIDAR.
5. Cowardin Stream Classifications are based solely on field observations for most depicted features. See Figure 5 for reaches which had formal assessment.

These plans and associated documents are the exclusive property of TIMMONS GROUP and shall not be reproduced in whole or in part and shall not be used for any purpose whatsoever, inclusive, but not limited to construction, bidding, and/or construction taking without the express written consent of TIMMONS GROUP.

| REVISIONS | |
|-----------|-------------|
| # | DESCRIPTION |
| | |
| | |
| | |
| | |
| | |
| | |
| | |
| | |
| | |
| | |

DRAWING DESCRIPTION
FIGURE 4:
 WETLANDS AND
 WATERS OF THE
 U.S. DELINEATION
 MAP

SCALE (FEET)
 0 200 400
 PLANS PRINTED AS 11x17 ARE HALF SCALE
 SCALE SHEET NUMBER
 H:1" = 200' 11 of 20